

**LESLIEVILLE ELEMENTARY SCHOOL  
3 YEAR EDUCATION PLAN  
2010 - 2013**



**October 2010 Accountability Pillar Overall Summary (OPTIONAL)**

Goal	Measure Category	Measure Category Evaluation	Measure	Leslieville Elementary School			Alberta			Measure Evaluation		
				Current Result	Prev Year Result	Prev 3 yr Average	Current Result	Prev Year Result	Prev 3 Yr Average	Achievement	Improvement	Overall
Goal 1: High-quality learning opportunities	Safe and Caring Schools	Good	Safe and Caring	87.8	89.0	89.6	87.6	86.9	85.4	High	Maintained	Good
	Student Learning Opportunities	n/a	Program of Studies	73.7	78.3	76.7	80.5	80.3	79.4	Intermediate	Maintained	Acceptable
			Education Quality	93.7	96.1	92.7	89.2	89.3	88.4	Very High	Maintained	Excellent
			Drop Out Rate	n/a	n/a	n/a	4.3	4.8	4.8	n/a	n/a	n/a
			High School Completion Rate (3 yr)	n/a	n/a	n/a	71.5	70.8	70.9	n/a	n/a	n/a
Goal 2: Excellence in student learning outcomes	Student Learning Achievement (Grades K-9)	Excellent	PAT: Acceptable	93.3	89.1	82.0	79.1	78.3	77.2	Very High	Improved	Excellent
			PAT: Excellence	25.0	28.1	20.9	19.4	18.3	18.2	Very High	Maintained	Excellent
	Student Learning Achievement (Grades 10-12)	n/a	Diploma: Acceptable	n/a	n/a	n/a	83.4	84.3	84.3	n/a	n/a	n/a
			Diploma: Excellence	n/a	n/a	n/a	19.0	18.5	19.2	n/a	n/a	n/a
			Diploma Exam Participation Rate (4+ Exams)	n/a	n/a	n/a	53.5	53.3	53.6	n/a	n/a	n/a
			Rutherford Scholarship Eligibility Rate (Revised)	n/a	n/a	n/a	56.9	57.3	56.7	n/a	n/a	n/a
	Preparation for Lifelong Learning, World of Work, Citizenship	n/a	Transition Rate (6 yr)	n/a	n/a	n/a	59.8	59.2	58.7	n/a	n/a	n/a
			Work Preparation	73.1	84.6	81.0	79.9	79.6	78.9	Intermediate	Maintained	Acceptable
Citizenship			84.4	84.7	83.5	81.4	80.3	78.3	Very High	Maintained	Excellent	
Goal 4: Highly responsive and responsible education system	Parental Involvement	Good	Parental Involvement	81.1	91.9	89.4	80.0	80.1	78.6	High	Maintained	Good
	Continuous Improvement	Excellent	School Improvement	81.1	89.0	84.8	79.9	79.4	77.6	Very High	Maintained	Excellent

Notes:

1. PAT results are a weighted average of the percent meeting standards (Acceptable, Excellence) on Provincial Achievement Tests. The weights are the number of students enrolled in each course. Courses included: English Language Arts (Grades 3, 6, 9), Science (Grades 6, 9), French Language Arts (Grades 6, 9), Français (Grades 6, 9).
2. Diploma results are a weighted average of percent meeting standards (Acceptable, Excellence) on Diploma Examinations. The weights are the number of students writing the Diploma Examination for each course. Courses included: English Language Arts 30-1, English Language Arts 30-2, French Language Arts 30-1, Français 30-1, Pure Mathematics 30, Applied Mathematics 30, Biology 30, Science 30.
3. Overall evaluations can only be calculated if both improvement and achievement evaluations are available.
4. The subsequent pages include evaluations for each performance measure. If jurisdictions desire not to present this information for each performance measure in the subsequent pages, please include a reference to this overall summary page for each performance measure.
5. Data values have been suppressed where the number of students is less than 6. Suppression is marked with an asterisk (\*).

Measure Evaluation Reference (Optional)

**Achievement Evaluation**

Achievement evaluation is based upon a comparison of Current Year data to a set of standards which remain consistent over time. The Standards are calculated by taking the 3 year average of baseline data for each measure across all school jurisdictions and calculating the 5th, 25th, 75th and 95th percentiles. Once calculated, these standards remain in place from year to year to allow for consistent planning and evaluation.

The table below shows the range of values defining the 5 achievement evaluation levels for each measure.

Measure	Very Low	Low	Intermediate	High	Very High
Safe and Caring	0.00 - 77.62	77.62 - 81.05	81.05 - 84.50	84.50 - 88.03	88.03 - 100.00
Program of Studies	0.00 - 66.31	66.31 - 72.65	72.65 - 78.43	78.43 - 81.59	81.59 - 100.00
Education Quality	0.00 - 80.94	80.94 - 84.23	84.23 - 87.23	87.23 - 89.60	89.60 - 100.00
Drop Out Rate	100.00 - 9.40	9.40 - 6.90	6.90 - 4.27	4.27 - 2.79	2.79 - 0.00
High School Completion Rate (3 yr)	0.00 - 57.03	57.03 - 62.36	62.36 - 73.88	73.88 - 81.79	81.79 - 100.00
PAT: Acceptable	0.00 - 65.53	65.53 - 78.44	78.44 - 85.13	85.13 - 89.49	89.49 - 100.00
PAT: Excellence	0.00 - 9.19	9.19 - 11.96	11.96 - 17.99	17.99 - 22.45	22.45 - 100.00
Diploma: Acceptable	0.00 - 74.42	74.42 - 83.58	83.58 - 88.03	88.03 - 92.35	92.35 - 100.00
Diploma: Excellence	0.00 - 10.31	10.31 - 15.67	15.67 - 20.27	20.27 - 23.77	23.77 - 100.00
Diploma Exam Participation Rate (4+ Exams)	0.00 - 31.10	31.10 - 44.11	44.11 - 55.78	55.78 - 65.99	65.99 - 100.00
Rutherford Scholarship Eligibility Rate (Revised)	0.00 - 43.18	43.18 - 49.83	49.83 - 59.41	59.41 - 70.55	70.55 - 100.00
Transition Rate (6 yr)	0.00 - 39.80	39.80 - 46.94	46.94 - 56.15	56.15 - 68.34	68.34 - 100.00
Work Preparation	0.00 - 66.92	66.92 - 72.78	72.78 - 77.78	77.78 - 86.13	86.13 - 100.00
Citizenship	0.00 - 66.30	66.30 - 71.63	71.63 - 77.50	77.50 - 81.08	81.08 - 100.00
Parental Involvement	0.00 - 70.76	70.76 - 74.58	74.58 - 78.50	78.50 - 82.30	82.30 - 100.00
School Improvement	0.00 - 65.25	65.25 - 70.85	70.85 - 76.28	76.28 - 80.41	80.41 - 100.00

Notes:

- 1) For all measures except Drop Out Rate: The range of values at each evaluation level is interpreted as greater than or equal to the lower value, and less than the higher value. For the Very High evaluation level, values range from greater than the lower value to 100%.
- 2) Drop Out Rate measure: As "Drop-out Rate" is inverse to most measures (i.e. lower values are "better"), the range of values at each evaluation level is interpreted as greater than the lower value and less than or equal to the higher value. For the Very High evaluation level, values range from 0% to less than or equal to the higher value.

**Improvement Table**

For each jurisdiction, improvement evaluation consists of comparing the Current Year result for each measure with the previous three-year average. A chi-square statistical test is used to determine the significance of the improvement. This test takes into account the size of the jurisdiction in the calculation to make improvement evaluation fair across jurisdictions of different sizes.

The table below shows the definition of the 5 improvement evaluation levels based upon the chi-square result.

Evaluation Category	Chi-Square Range
Declined Significantly	3.84 + (current < previous 3-year average)
Declined	1.00 - 3.83 (current < previous 3-year average)
Maintained	less than 1.00
Improved	1.00 - 3.83 (current > previous 3-year average)
Improved Significantly	3.84 + (current > previous 3-year average)

**Overall Evaluation Table**

The overall evaluation combines the Achievement Evaluation and the Improvement Evaluation. The table below illustrates how the Achievement and Improvement evaluations are combined to get the overall evaluation.

Improvement	Achievement				
	Very High	High	Intermediate	Low	Very Low
Improved Significantly	Excellent	Good	Good	Good	Acceptable
Improved	Excellent	Good	Good	Acceptable	Issue
Maintained	Excellent	Good	Acceptable	Issue	Concern
Declined	Good	Acceptable	Issue	Issue	Concern
Declined Significantly	Acceptable	Issue	Issue	Concern	Concern

**Category Evaluation**

The category evaluation is an average of the Overall Evaluation of the measures that make up the category. For the purpose of the calculation, consider an Overall Evaluation of Excellent to be 2, Good to be 1, Acceptable to be 0, Issue to be -1, and Concern to be -2. The simple average (mean) of these values rounded to the nearest integer produces the Category Evaluation value. This is converted back to a colour using the same scale above (e.g. 2=Excellent, 1=Good, 0=Intermediate, -1=Issue, -2=Concern).

## Goal One: High Quality Learning Opportunities

Outcome: Schools environments are safe and caring.

Performance Measure	Results (in percentages)					Target <sup>1</sup>	Evaluation			Targets <sup>2</sup>		
	2006	2007	2008	2009	2010	2010	Achievement	Improvement	Overall	2011	2012	2013
Percentage of teacher, parent and student agreement that: students are safe at school, are learning the importance of caring for others, are learning respect for others and are treated fairly in school.	89.1	94.1	85.8	89.0	87.8		High	Maintained	Good	90	90	90

**Strategies**

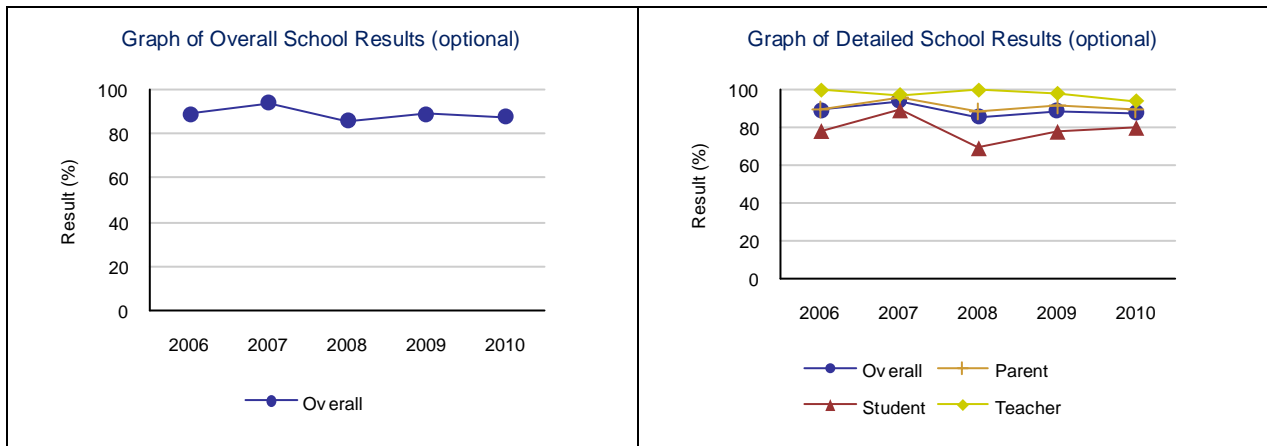
Note:

For survey measures, schools may report overall results aggregated across respondent groups or results for each respondent group, whichever they prefer. Including the evaluation of results is optional for schools.

<sup>1</sup> If school had set a target for 2009/10 in the three year education plan 2009/10 – 2011/12, include it in the space provided for each required measure.

<sup>2</sup> If school had set targets for 2010/11 – 2012/13, include it in the space provided for each required measure.

Measure Details (OPTIONAL)															
Percentage of teacher, parent and student agreement that: students are safe at school, are learning the importance of caring for others, are learning respect for others and are treated fairly in school.															
	School					Authority					Province				
	2006	2007	2008	2009	2010	2006	2007	2008	2009	2010	2006	2007	2008	2009	2010
Overall	89.1	94.1	85.8	89.0	87.8	80.4	78.5	82.8	83.8	83.2	84.4	84.2	85.1	86.9	87.6
Teacher	100.0	97.5	100.0	98.2	94.0	88.0	87.9	90.7	92.9	92.1	92.8	92.6	93.1	93.8	94.4
Parent	89.2	95.7	88.2	91.2	89.5	80.2	74.4	80.2	78.2	80.6	82.1	81.7	83.2	85.3	86.1
Student	78.2	89.2	69.0	77.8	79.9	73.0	73.3	77.5	80.4	76.8	78.4	78.5	79.1	81.7	82.2



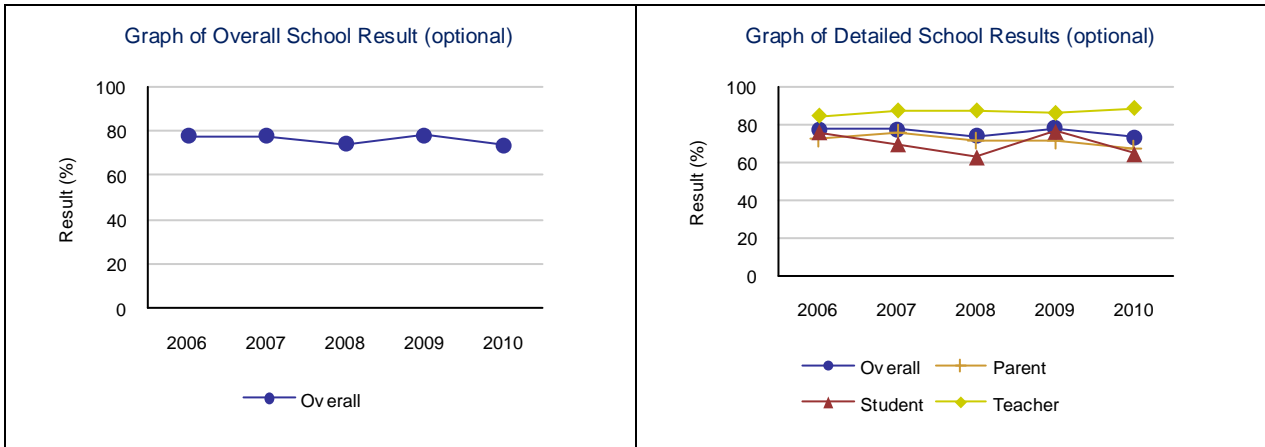
Note: Data values have been suppressed where the number of respondents is less than 6. Suppression is marked with an asterisk (\*).

Outcome: *The education system meets the needs of all K–12 students and supports our society and the economy.*

Performance Measure	Results (in percentages)					Target	Evaluation			Targets		
	2006	2007	2008	2009	2010	2010	Achievement	Improvement	Overall	2011	2012	2013
Percentage of teachers, parents and students satisfied with the opportunity for students to receive a broad program of studies including fine arts, career, technology, and health and physical education.	77.9	77.8	74.0	78.3	73.7		Intermediate	Maintained	Acceptable	75	77	80
Percentage of teachers, parents and students satisfied with the overall quality of basic education.	95.0	94.0	88.0	96.1	93.7		Very High	Maintained	Excellent	95	95	95

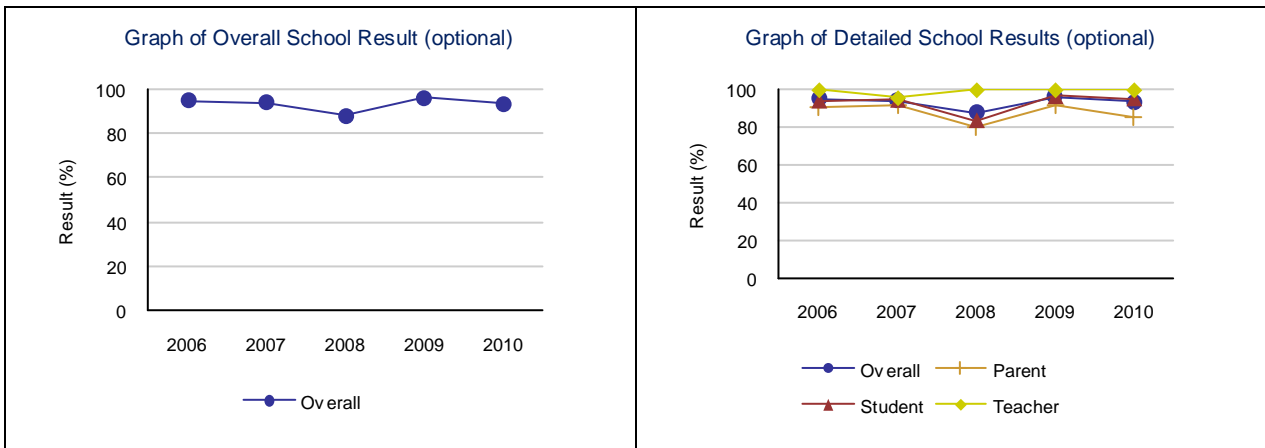
**Strategies**

Measure Details (OPTIONAL)															
Percentage of teachers, parents and students satisfied with the opportunity for students to receive a broad program of studies including fine arts, career, technology, and health and physical education.															
	School					Authority					Province				
	2006	2007	2008	2009	2010	2006	2007	2008	2009	2010	2006	2007	2008	2009	2010
Overall	77.9	77.8	74.0	78.3	73.7	71.8	68.4	73.4	74.5	71.9	78.1	78.5	79.4	80.3	80.5
Teacher	84.8	87.5	87.5	86.2	88.8	77.9	76.3	82.0	80.9	79.0	85.2	85.7	86.4	86.8	87.7
Parent	72.6	75.9	71.5	72.1	67.6	72.4	68.0	70.3	69.9	69.6	76.6	76.9	77.6	78.7	78.0
Student	76.3	70.0	63.1	76.5	64.8	65.1	60.9	67.9	72.8	67.1	72.6	72.9	74.1	75.3	75.9



Note: Data values have been suppressed where the number of respondents is less than 6. Suppression is marked with an asterisk (\*).

Measure Details (OPTIONAL)															
Percentage of teachers, parents and students satisfied with the overall quality of basic education.															
	School					Authority					Province				
	2006	2007	2008	2009	2010	2006	2007	2008	2009	2010	2006	2007	2008	2009	2010
Overall	95.0	94.0	88.0	96.1	93.7	86.5	84.4	87.1	87.4	86.2	87.7	87.6	88.2	89.3	89.2
Teacher	100.0	95.8	100.0	100.0	100.0	92.6	92.8	95.9	94.8	95.1	94.8	94.7	94.9	95.3	95.6
Parent	90.9	91.7	80.2	91.7	85.6	82.2	77.0	79.9	78.7	78.9	81.6	81.8	83.0	84.4	83.9
Student	94.2	94.6	83.7	96.6	95.4	84.8	83.3	85.4	88.9	84.5	86.6	86.4	86.6	88.3	88.2



Note: Data values have been suppressed where the number of respondents is less than 6. Suppression is marked with an asterisk (\*).

## Goal Two: Excellence in Student Learning Outcomes

*Outcome: Students demonstrate high standards in learner outcomes.*

Performance Measure	Results (in percentages)					Target	Evaluation			Targets		
	2006	2007	2008	2009	2010	2010	Achievement	Improvement	Overall	2011	2012	2013
Overall percentage of students in Grades 3, 6 and 9 who achieved the acceptable standard on provincial achievement tests.	92.8	82.9	74.2	89.1	93.3		Very High	Improved	Excellent	90	90	90
Overall percentage of students in Grades 3, 6 and 9 who achieved the standard of excellence on provincial achievement tests.	17.4	18.6	16.1	28.1	25.0		Very High	Maintained	Excellent	25	25	25

### Strategies

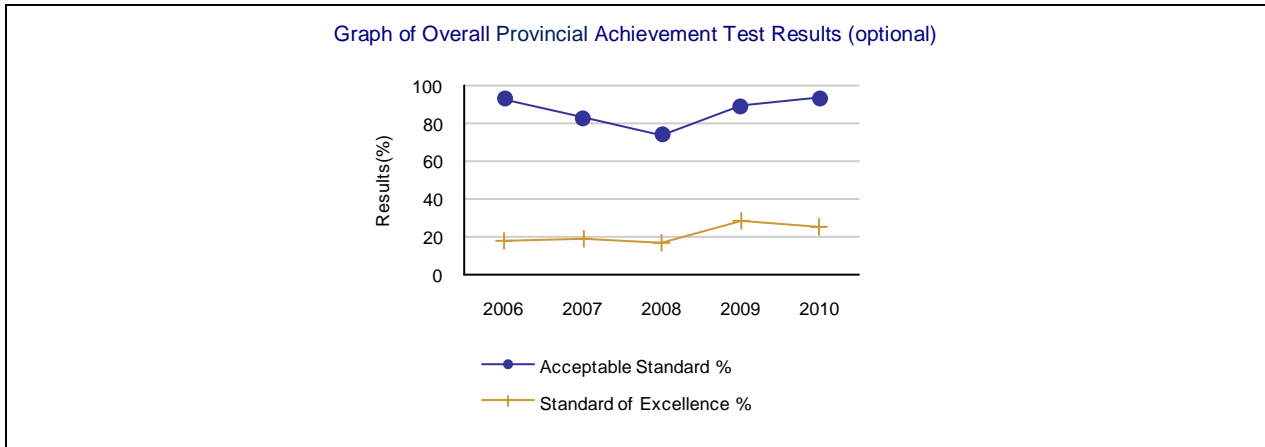
Notes:

1. Aggregated PAT results are based upon a weighted average of percent meeting standards (Acceptable, Excellence). The weights are the number of students enrolled in each course. Courses included: English Language Arts (Grades 3, 6, 9), Science (Grades 6, 9), French Language Arts (Grades 6, 9), Français (Grades 6, 9). The percentages achieving the acceptable standard include the percentages achieving the standard of excellence.
2. Aggregated Diploma results are a weighted average of percent meeting standards (Acceptable, Excellence) on Diploma Examinations. The weights are the number of students writing the Diploma Examination for each course. Courses included: English Language Arts 30-1, English Language Arts 30-2, French Language Arts 30-1, Français 30-1, Pure Mathematics 30, Applied Mathematics 30, Biology 30, Science 30. The percentages achieving the acceptable standard include the percentages achieving the standard of excellence.
3. Diploma Examination Participation rates are based upon a cohort of grade 10 students who are tracked over time.
4. Please note that the rules for Rutherford Scholarships changed in 2008, which increased the number of students eligible for Rutherford Scholarships. The history for the measure has been re-computed to allow for trends to be identified.
5. Data values have been suppressed where the number of students is less than 6. Suppression is marked with an asterisk (\*).

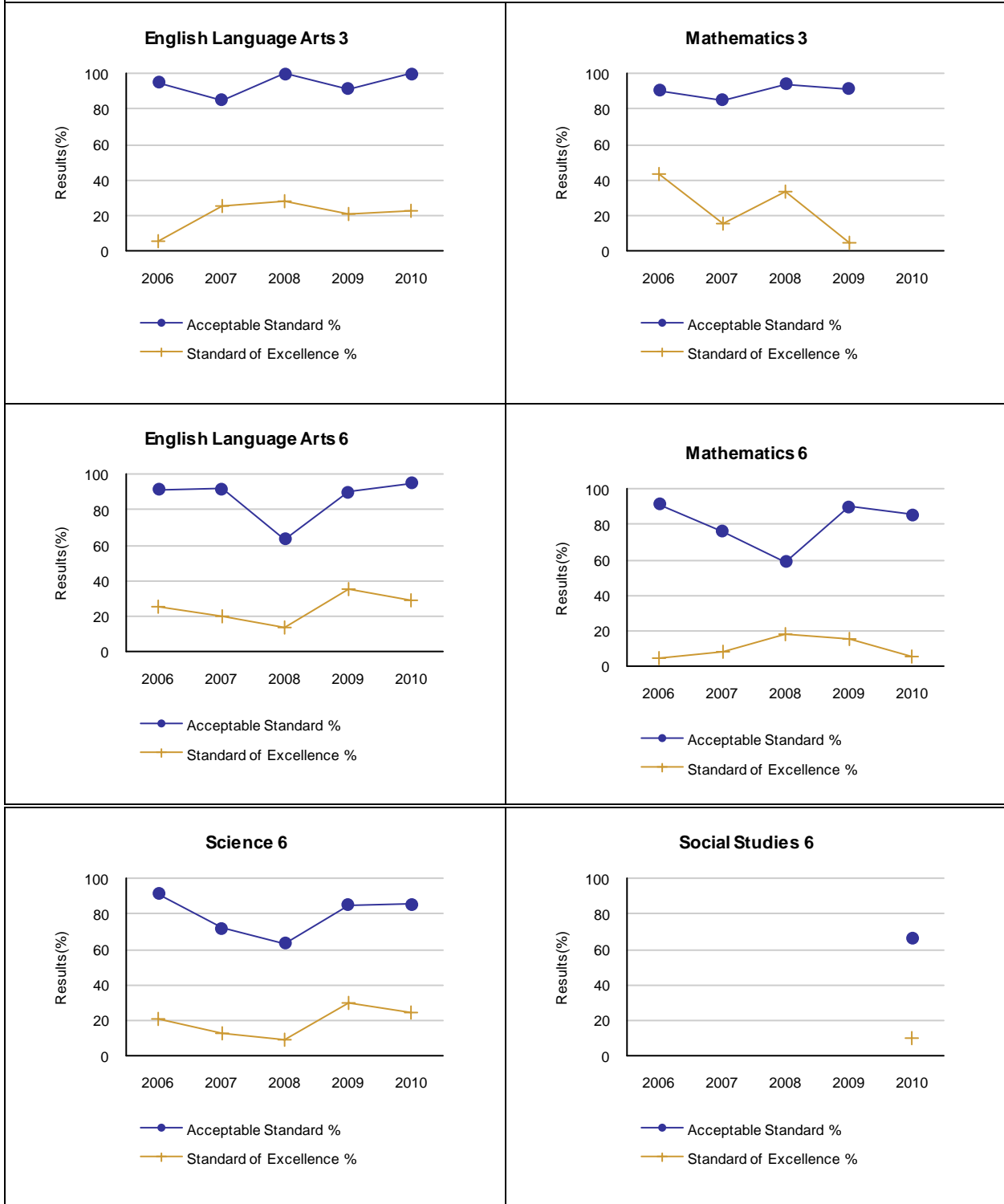
Measure Details (OPTIONAL)													
PAT Course by Course Results by Number Enrolled.													
		Results (in percentages)										Target	
		2006		2007		2008		2009		2010		2010	
		A	E	A	E	A	E	A	E	A	E	A	E
English Language Arts 3	School	95.2	4.8	85.0	25.0	100.0	27.8	91.7	20.8	100.0	22.2	100	25
	Authority	85.3	11.4	84.0	12.8	86.8	12.2	86.4	11.2	84.2	16.9		
	Province	81.3	14.1	80.3	17.7	80.1	16.1	81.3	18.2	81.6	19.5		
Mathematics 3	School	90.5	42.9	85.0	15.0	94.4	33.3	91.7	4.2	n/a	n/a	100	30
	Authority	87.2	35.3	88.0	23.7	84.7	21.6	88.6	24.7	78.3	14.2		
	Province	82.0	26.9	79.9	23.5	78.7	23.9	79.7	26.8	76.4	24.8		
English Language Arts 6	School	91.7	25.0	92.0	20.0	63.6	13.6	90.0	35.0	95.2	28.6	100	25
	Authority	81.6	13.9	83.3	16.9	84.6	17.7	88.6	17.1	83.0	13.1		
	Province	79.0	15.9	80.3	19.8	81.1	21.0	81.8	18.9	83.3	18.9		
Mathematics 6	School	91.7	4.2	76.0	8.0	59.1	18.2	90.0	15.0	85.7	4.8	100	20
	Authority	78.1	12.8	75.3	12.1	75.3	14.1	83.2	17.4	74.2	14.6		
	Province	75.2	15.6	74.0	14.5	74.6	15.9	76.6	16.8	74.3	16.5		
Science 6	School	91.7	20.8	72.0	12.0	63.6	9.1	85.0	30.0	85.7	23.8	90	25
	Authority	84.0	29.3	74.3	21.6	77.6	22.2	80.4	25.9	79.4	22.5		
	Province	78.1	27.7	75.2	26.6	74.8	24.1	76.5	24.8	76.8	26.4		
Social Studies 6	School	n/a	n/a	n/a	n/a	n/a	n/a	n/a	n/a	66.7	9.5	75	15
	Authority	n/a	n/a	n/a	n/a	n/a	n/a	n/a	n/a	71.3	13.1		
	Province	n/a	n/a	n/a	n/a	n/a	n/a	n/a	n/a	71.0	16.4		

Note: Data values have been suppressed where the number of students is less than 6. Suppression is marked with an asterisk (\*).

\*\* "A" = Acceptable; "E" = Excellence — the percentages achieving the acceptable standard include the percentages achieving the standard of excellence.



Graph of Provincial Achievement Test Results by Course (optional)



Note: Data values have been suppressed where the number of students is less than 6. Suppression is marked with an asterisk (\*).

**Measure Evaluation Reference - Achievement Evaluation**

Achievement evaluation is based upon a comparison of Current Year data to a set of standards which remain consistent over time. The Standards are calculated by taking the 3 year average of baseline data for each measure across all school jurisdictions and calculating the 5th, 25th, 75th, and 95th percentiles. Once calculated, these standards remain in place from year to year to allow for consistent planning and evaluation.

The table below shows the range of values defining the 5 achievement evaluation levels for each measure.

Course	Measure	Very Low	Low	Intermediate	High	Very High
English Language Arts 3	Acceptable Standard	0.00 - 72.53	72.53 - 80.49	80.49 - 89.12	89.12 - 93.04	93.04 - 100.00
	Standard of Excellence	0.00 - 6.06	6.06 - 11.35	11.35 - 16.93	16.93 - 20.27	20.27 - 100.00
English Language Arts 6	Acceptable Standard	0.00 - 67.95	67.95 - 78.40	78.40 - 86.09	86.09 - 91.37	91.37 - 100.00
	Standard of Excellence	0.00 - 6.83	6.83 - 11.65	11.65 - 17.36	17.36 - 22.46	22.46 - 100.00
French Language Arts 6	Acceptable Standard	0.00 - 41.69	41.69 - 73.54	73.54 - 92.32	92.32 - 97.93	97.93 - 100.00
	Standard of Excellence	0.00 - 2.72	2.72 - 8.13	8.13 - 15.29	15.29 - 23.86	23.86 - 100.00
Science 6	Acceptable Standard	0.00 - 60.36	60.36 - 78.51	78.51 - 86.46	86.46 - 90.64	90.64 - 100.00
	Standard of Excellence	0.00 - 11.74	11.74 - 17.42	17.42 - 25.34	25.34 - 34.31	34.31 - 100.00

**Notes:**

The range of values at each evaluation level is interpreted as greater than or equal to the lower value, and less than the higher value. For the Very High evaluation level, values range from greater than the lower value to 100%.

Too few jurisdictions offer Français (Grades 6, 9) for an Achievement Evaluation to be calculated. However, the results from Français (Grades 6, 9) are included in the aggregation of all PAT courses.

Evaluations for Mathematics (Grades 3, 6, 9) and Social Studies (Grades 6, 9) are not calculated due to the changes in the tests.

**Improvement Table**

For each jurisdiction, improvement evaluation consists of comparing the Current Year result for each measure with the previous three-year average. A chi-square statistical test is used to determine the significance of the improvement. This test takes into account the size of the jurisdiction in the calculation to make improvement evaluation fair across jurisdictions of different sizes.

The table below shows the definition of the 5 improvement evaluation levels based upon the chi-square result.

Evaluation Category	Chi-Square Range
Declined Significantly	3.84 + (current < previous 3-year average)
Declined	1.00 - 3.83 (current < previous 3-year average)
Maintained	less than 1.00
Improved	1.00 - 3.83 (current > previous 3-year average)
Improved Significantly	3.84 + (current > previous 3-year average)

**Overall Evaluation Table**

The overall evaluation combines the Achievement Evaluation and the Improvement Evaluation. The table below illustrates how the Achievement and Improvement evaluations are combined to get the overall evaluation.

	Achievement				
	Very High	High	Intermediate	Low	Very Low
Improved Significantly	Excellent	Good	Good	Good	Acceptable
Improved	Excellent	Good	Good	Acceptable	Issue
Maintained	Excellent	Good	Acceptable	Issue	Concern
Declined	Good	Acceptable	Issue	Issue	Concern
Declined Significantly	Acceptable	Issue	Issue	Concern	Concern

**School: 4104 Leslieville Elementary School**

Performance Measure		Results (in percentages)					Target
		2006	2007	2008	2009	2010	2010
Participation rates in provincial achievement tests (PATs) for Grades 3, 6 and 9.							
English Language Arts 3	School	100.0	100.0	100.0	100.0	100.0	100
	Authority	94.6	95.2	96.2	94.7	97.0	
	Province	90.6	90.1	89.8	90.6	91.1	
Mathematics 3	School	100.0	100.0	100.0	100.0	n/a	100
	Authority	95.4	96.0	95.4	95.2	96.2	
	Province	90.8	90.5	90.5	91.2	88.3	
English Language Arts 6	School	95.8	96.0	81.8	90.0	95.2	100
	Authority	96.0	93.1	92.3	95.1	91.1	
	Province	90.1	89.6	89.5	90.0	90.7	
Mathematics 6	School	100.0	96.0	86.4	90.0	100.0	100
	Authority	96.3	92.5	92.8	95.1	91.0	
	Province	90.6	90.0	90.0	90.6	88.3	
Science 6	School	100.0	96.0	86.4	90.0	100.0	100
	Authority	96.3	92.0	93.0	94.0	92.2	
	Province	90.0	89.1	89.0	89.6	90.5	
Social Studies 6	School	n/a	n/a	n/a	n/a	100.0	100
	Authority	n/a	n/a	n/a	n/a	92.4	
	Province	n/a	n/a	n/a	n/a	90.3	
	Province	n/a	n/a	n/a	n/a	90.2	

Outcome: Students are well prepared for employment.

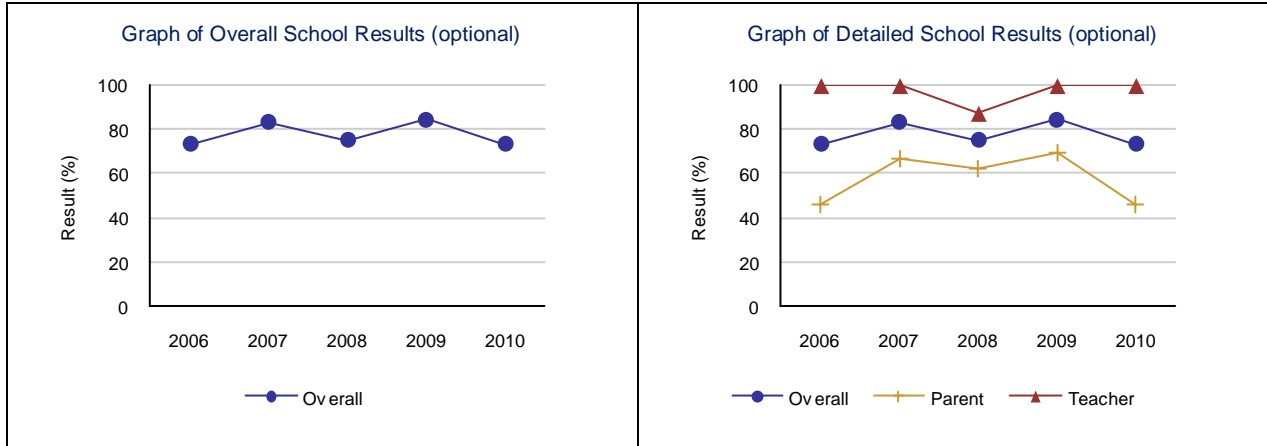
Performance Measure	Results (in percentages)					Target	Evaluation			Targets		
	2006	2007	2008	2009	2010	2010	Achievement	Improvement	Overall	2011	2012	2013
Percentages of teachers and parents who agree that students are taught attitudes and behaviours that will make them successful at work when they finish school.	73.1	83.3	75.0	84.6	73.1		Intermediate	Maintained	Acceptable	75	78	80

**Strategies**

--

**Measure Details (OPTIONAL)**

Percentages of teachers and parents who agree that students are taught attitudes and behaviours that will make them successful at work when they finish school.															
	School					Authority					Province				
	2006	2007	2008	2009	2010	2006	2007	2008	2009	2010	2006	2007	2008	2009	2010
Overall	73.1	83.3	75.0	84.6	73.1	72.5	71.5	76.8	76.2	72.9	77.0	77.1	80.1	79.6	79.9
Teacher	100.0	100.0	87.5	100.0	100.0	84.0	84.2	89.2	91.0	90.0	89.4	89.2	89.3	88.9	90.0
Parent	46.2	66.7	62.5	69.2	46.2	61.0	58.7	64.3	61.5	55.9	64.6	65.1	70.9	70.2	69.8



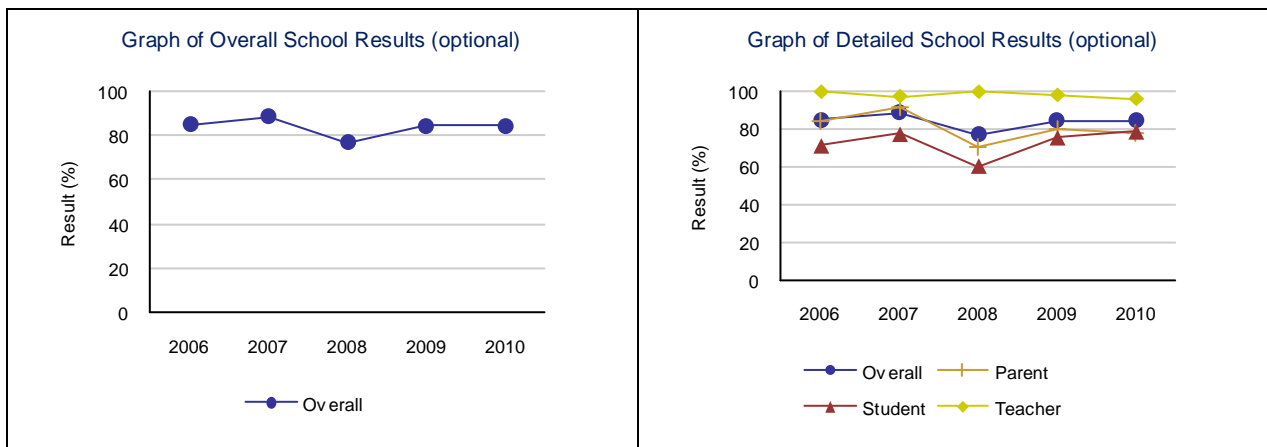
Note: Data values have been suppressed where the number of respondents is less than 6. Suppression is marked with an asterisk (\*).

*Outcome: Students model the characteristics of active citizenship.*

Performance Measure	Results (in percentages)					Target	Evaluation			Targets		
	2006	2007	2008	2009	2010	2010	Achievement	Improvement	Overall	2011	2012	2013
Percentages of teachers, parents and students who are satisfied that students model the characteristics of active citizenship.	85.1	88.8	77.0	84.7	84.4		Very High	Maintained	Excellent	85	85	85

**Strategies**

Measure Details (OPTIONAL)															
Percentages of teachers, parents and students who are satisfied that students model the characteristics of active citizenship.															
	School					Authority					Province				
	2006	2007	2008	2009	2010	2006	2007	2008	2009	2010	2006	2007	2008	2009	2010
Overall	85.1	88.8	77.0	84.7	84.4	69.7	68.5	72.0	75.1	75.1	76.8	76.6	77.9	80.3	81.4
Teacher	100.0	97.5	100.0	98.2	96.0	81.0	81.3	84.0	88.6	91.4	90.3	89.9	90.6	91.8	93.0
Parent	83.9	91.3	70.6	80.0	78.4	66.5	63.2	65.6	66.6	68.4	72.4	72.6	74.7	77.4	78.5
Student	71.4	77.7	60.4	75.8	79.0	61.7	61.1	66.3	70.0	65.4	67.5	67.1	68.5	71.8	72.7



Note: Data values have been suppressed where the number of respondents is less than 6. Suppression is marked with an asterisk (\*).

Also report targets and results for all local school/authority measures related to Goal 2 (minimum one year of results – authorities are encouraged to provide multi-year results for trend analysis).

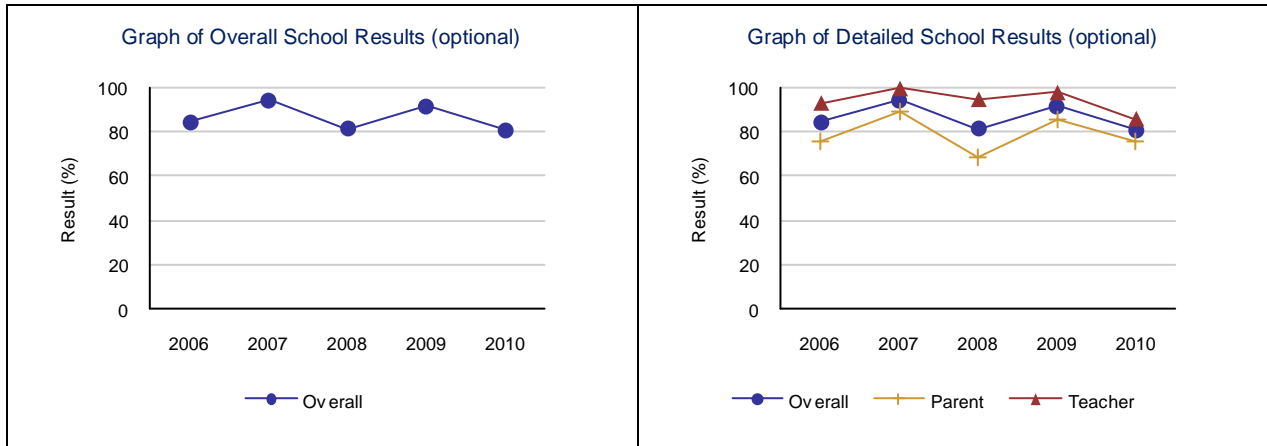
## Goal Four: Highly Responsive and Responsible Jurisdiction

Outcome: *The jurisdiction demonstrates effective working relationships.*

Performance Measure	Results (in percentages)					Target	Evaluation			Targets		
	2006	2007	2008	2009	2010	2010	Achievement	Improvement	Overall	2011	2012	2013
Percentage of teachers and parents satisfied with parental involvement in decisions about their child's education.	84.6	94.5	81.6	91.9	81.1		High	Maintained	Good	85	85	85

<b>Strategies</b>
-------------------

Measure Details (OPTIONAL)															
Percentage of teachers and parents satisfied with parental involvement in decisions about their child's education.															
	School					Authority					Province				
	2006	2007	2008	2009	2010	2006	2007	2008	2009	2010	2006	2007	2008	2009	2010
Overall	84.6	94.5	81.6	91.9	81.1	77.8	75.2	80.0	79.4	76.8	77.9	77.5	78.2	80.1	80.0
Teacher	93.3	100.0	95.0	98.1	86.0	84.9	86.1	90.1	90.0	88.6	87.6	87.1	87.5	88.0	88.6
Parent	75.8	89.0	68.2	85.7	76.1	70.7	64.3	69.9	68.8	65.0	68.1	67.9	69.0	72.2	71.3



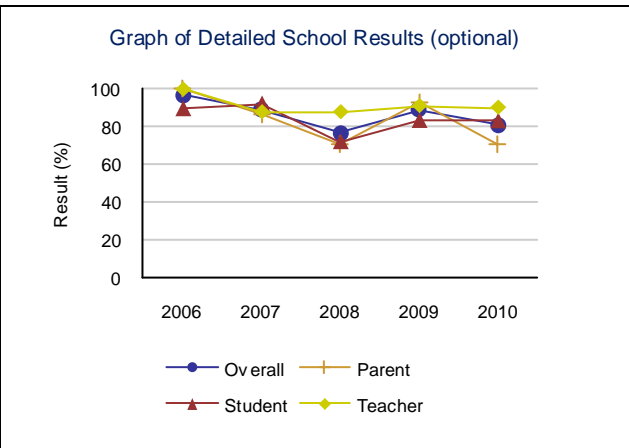
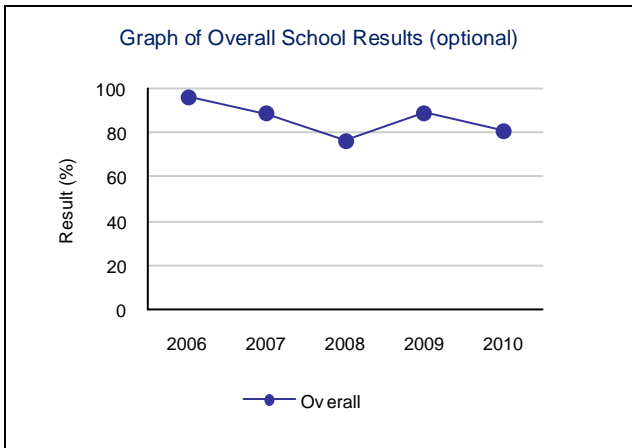
Note: Data values have been suppressed where the number of respondents is less than 6. Suppression is marked with an asterisk (\*).

Outcome: The jurisdiction demonstrates leadership, innovation and continuous improvement.

Performance Measure	Results (in percentages)					Target	Evaluation			Targets		
	2006	2007	2008	2009	2010	2010	Achievement	Improvement	Overall	2011	2012	2013
Percentages of teachers, parents and students indicating that their school and schools in their jurisdiction have improved or stayed the same the last three years.	96.5	88.7	76.6	89.0	81.1		Very High	Maintained	Excellent	85	85	85

**Strategies**

Measure Details (OPTIONAL)															
Percentages of teachers, parents and students indicating that their school and schools in their jurisdiction have improved or stayed the same the last three years.															
	School					Authority					Province				
	2006	2007	2008	2009	2010	2006	2007	2008	2009	2010	2006	2007	2008	2009	2010
Overall	96.5	88.7	76.6	89.0	81.1	74.0	67.0	75.2	79.0	76.5	76.8	76.3	77.0	79.4	79.9
Teacher	100.0	87.5	87.5	90.9	90.0	75.0	62.1	73.6	83.2	77.2	75.5	74.5	75.6	78.2	80.8
Parent	100.0	86.7	70.6	92.9	70.4	72.2	66.2	74.4	71.9	74.7	75.4	75.1	75.9	78.1	77.0
Student	89.4	92.1	71.7	83.1	82.9	74.9	72.7	77.7	81.7	77.6	79.4	79.3	79.5	81.8	81.8



Note: Data values have been suppressed where the number of respondents is less than 6. Suppression is marked with an asterisk (\*).

Also report targets and results for all local school/authority measures related to Goal 4 (minimum one year of results – authorities are encouraged to provide multi-year results for trend analysis).

In addition, please include targets and results on measures in relation to local goals and outcomes (minimum one year of results – authorities are encouraged to provide multi-year results for trend analysis).