

# **Leslieville Elementary School 2012-2013 3-Year Education Plan and Annual Education Results Report (AERR)**

**Combined 2012 Accountability Pillar Overall Summary**

| Measure Category  | Measure Category Evaluation | Measure   | Leslieville Elementary School |                  |                     | Alberta        |                  |                     | Measure Evaluation |             |            |
|---|-----------------------------|---|-------------------------------|------------------|---------------------|----------------|------------------|---------------------|--------------------|-------------|------------|
|   |                             |   | Current Result                | Prev Year Result | Prev 3 Year Average | Current Result | Prev Year Result | Prev 3 Year Average | Achievement        | Improvement | Overall    |
| Safe and Caring Schools                                       | Excellent                   | Safe and Caring                                   | 89.5                          | 86.2             | 87.7                | 88.6           | 88.1             | 87.5                | Very High          | Maintained  | Excellent  |
| Student Learning Opportunities                                | n/a                         | Program of Studies                                | 73.3                          | 77.3             | 76.4                | 80.7           | 80.9             | 80.6                | Intermediate       | Maintained  | Acceptable |
|   |                             | Education Quality                                 | 93.7                          | 91.2             | 93.7                | 89.4           | 89.4             | 89.3                | Very High          | Maintained  | Excellent  |
|   |                             | Drop Out Rate                                     | n/a                           | n/a              | n/a                 | 3.2            | 4.2              | 4.4                 | n/a                | n/a         | n/a        |
|   |                             | High School Completion Rate (3 yr)                | n/a                           | n/a              | n/a                 | 74.1           | 72.6             | 71.6                | n/a                | n/a         | n/a        |
| Student Learning Achievement (Grades K-9)                     | Good                        | PAT: Acceptable                                   | 87.0                          | 97.6             | 93.3                | 79.1           | 79.3             | 78.9                | High               | Maintained  | Good       |
|   |                             | PAT: Excellence                                   | 18.5                          | 31.7             | 28.3                | 20.9           | 19.6             | 19.1                | High               | Maintained  | Good       |
| Student Learning Achievement (Grades 10-12)                   | n/a                         | Diploma: Acceptable                               | n/a                           | n/a              | n/a                 | 83.5           | 82.6             | 83.5                | n/a                | n/a         | n/a        |
|   |                             | Diploma: Excellence                               | n/a                           | n/a              | n/a                 | 18.6           | 18.7             | 18.7                | n/a                | n/a         | n/a        |
|   |                             | Diploma Exam Participation Rate (4+ Exams)        | n/a                           | n/a              | n/a                 | 56.2           | 54.9             | 53.9                | n/a                | n/a         | n/a        |
|   |                             | Rutherford Scholarship Eligibility Rate (Revised) | n/a                           | n/a              | n/a                 | 61.5           | 59.6             | 58.0                | n/a                | n/a         | n/a        |
| Preparation for Lifelong Learning, World of Work, Citizenship | n/a                         | Transition Rate (6 yr)                            | n/a                           | n/a              | n/a                 | 58.4           | 59.3             | 59.5                | n/a                | n/a         | n/a        |
|   |                             | Work Preparation                                  | 69.4                          | 81.0             | 79.5                | 79.7           | 80.1             | 79.9                | Low                | Maintained  | Issue      |
|   |                             | Citizenship                                       | 84.6                          | 83.5             | 84.2                | 82.5           | 81.9             | 81.2                | Very High          | Maintained  | Excellent  |
| Parental Involvement  | Excellent                   | Parental Involvement                              | 82.7                          | 75.4             | 82.8                | 79.7           | 79.9             | 80.0                | Very High          | Maintained  | Excellent  |
| Continuous Improvement  | Excellent                   | School Improvement                                | 88.0                          | 79.0             | 83.0                | 80.0           | 80.1             | 79.8                | Very High          | Maintained  | Excellent  |

Notes:

1. PAT results are a weighted average of the percent meeting standards (Acceptable, Excellence) on Provincial Achievement Tests. The weights are the number of students enrolled in each course. Courses included: English Language Arts (Grades 3, 6, 9), Science (Grades 6, 9), French Language Arts (Grades 6, 9), Français (Grades 6, 9).
2. Diploma results are a weighted average of percent meeting standards (Acceptable, Excellence) on Diploma Examinations. The weights are the number of students writing the Diploma Examination for each course. Courses included: English Language Arts 30-1, English Language Arts 30-2, French Language Arts 30-1, Français 30-1, Pure Mathematics 30, Applied Mathematics 30, Biology 30, Science 30.
3. Overall evaluations can only be calculated if both improvement and achievement evaluations are available.
4. The subsequent pages include evaluations for each performance measure. If jurisdictions desire not to present this information for each performance measure in the subsequent pages, please include a reference to this overall summary page for each performance measure.
5. Data values have been suppressed where the number of students is less than 6. Suppression is marked with an asterisk (\*).

Measure Evaluation Reference

**Achievement Evaluation**

Achievement evaluation is based upon a comparison of Current Year data to a set of standards which remain consistent over time. The Standards are calculated by taking the 3 year average of baseline data for each measure across all school jurisdictions and calculating the 5th, 25th, 75th and 95th percentiles. Once calculated, these standards remain in place from year to year to allow for consistent planning and evaluation.

The table below shows the range of values defining the 5 achievement evaluation levels for each measure.

| Measure   | Very Low      | Low           | Intermediate  | High          | Very High      |
|---|---------------|---------------|---------------|---------------|----------------|
| Safe and Caring                                   | 0.00 - 77.62  | 77.62 - 81.05 | 81.05 - 84.50 | 84.50 - 88.03 | 88.03 - 100.00 |
| Program of Studies                                | 0.00 - 66.31  | 66.31 - 72.65 | 72.65 - 78.43 | 78.43 - 81.59 | 81.59 - 100.00 |
| Education Quality                                 | 0.00 - 80.94  | 80.94 - 84.23 | 84.23 - 87.23 | 87.23 - 89.60 | 89.60 - 100.00 |
| Drop Out Rate                                     | 100.00 - 9.40 | 9.40 - 6.90   | 6.90 - 4.27   | 4.27 - 2.79   | 2.79 - 0.00    |
| High School Completion Rate (3 yr)                | 0.00 - 57.03  | 57.03 - 62.36 | 62.36 - 73.88 | 73.88 - 81.79 | 81.79 - 100.00 |
| PAT: Acceptable                                   | 0.00 - 65.53  | 65.53 - 78.44 | 78.44 - 85.13 | 85.13 - 89.49 | 89.49 - 100.00 |
| PAT: Excellence                                   | 0.00 - 9.19   | 9.19 - 11.96  | 11.96 - 17.99 | 17.99 - 22.45 | 22.45 - 100.00 |
| Diploma: Acceptable                               | 0.00 - 74.42  | 74.42 - 83.58 | 83.58 - 88.03 | 88.03 - 92.35 | 92.35 - 100.00 |
| Diploma: Excellence                               | 0.00 - 10.31  | 10.31 - 15.67 | 15.67 - 20.27 | 20.27 - 23.77 | 23.77 - 100.00 |
| Diploma Exam Participation Rate (4+ Exams)        | 0.00 - 31.10  | 31.10 - 44.11 | 44.11 - 55.78 | 55.78 - 65.99 | 65.99 - 100.00 |
| Rutherford Scholarship Eligibility Rate (Revised) | 0.00 - 43.18  | 43.18 - 49.83 | 49.83 - 59.41 | 59.41 - 70.55 | 70.55 - 100.00 |
| Transition Rate (6 yr)                            | 0.00 - 39.80  | 39.80 - 46.94 | 46.94 - 56.15 | 56.15 - 68.34 | 68.34 - 100.00 |
| Work Preparation                                  | 0.00 - 66.92  | 66.92 - 72.78 | 72.78 - 77.78 | 77.78 - 86.13 | 86.13 - 100.00 |
| Citizenship                                       | 0.00 - 66.30  | 66.30 - 71.63 | 71.63 - 77.50 | 77.50 - 81.08 | 81.08 - 100.00 |
| Parental Involvement                              | 0.00 - 70.76  | 70.76 - 74.58 | 74.58 - 78.50 | 78.50 - 82.30 | 82.30 - 100.00 |
| School Improvement                                | 0.00 - 65.25  | 65.25 - 70.85 | 70.85 - 76.28 | 76.28 - 80.41 | 80.41 - 100.00 |

Notes:

- 1) For all measures except Drop Out Rate: The range of values at each evaluation level is interpreted as greater than or equal to the lower value, and less than the higher value. For the Very High evaluation level, values range from greater than or equal to the lower value to 100%.
- 2) Drop Out Rate measure: As "Drop Out Rate" is inverse to most measures (i.e. lower values are "better"), the range of values at each evaluation level is interpreted as greater than the lower value and less than or equal to the higher value. For the Very High evaluation level, values range from 0% to less than or equal to the higher value.

**Improvement Table**

For each jurisdiction, improvement evaluation consists of comparing the Current Year result for each measure with the previous three-year average. A chi-square statistical test is used to determine the significance of the improvement. This test takes into account the size of the jurisdiction in the calculation to make improvement evaluation fair across jurisdictions of different sizes.

The table below shows the definition of the 5 improvement evaluation levels based upon the chi-square result.

| Evaluation Category    | Chi-Square Range                                |
|------------------------|---|
| Declined Significantly | 3.84 + (current < previous 3-year average)      |
| Declined               | 1.00 - 3.83 (current < previous 3-year average) |
| Maintained             | less than 1.00                                  |
| Improved               | 1.00 - 3.83 (current > previous 3-year average) |
| Improved Significantly | 3.84 + (current > previous 3-year average)      |

**Overall Evaluation Table**

The overall evaluation combines the Achievement Evaluation and the Improvement Evaluation. The table below illustrates how the Achievement and Improvement evaluations are combined to get the overall evaluation.

| Improvement            | Achievement |            |              |            |            |
|------------------------|-------------|------------|--------------|------------|------------|
|                        | Very High   | High       | Intermediate | Low        | Very Low   |
| Improved Significantly | Excellent   | Good       | Good         | Good       | Acceptable |
| Improved               | Excellent   | Good       | Good         | Acceptable | Issue      |
| Maintained             | Excellent   | Good       | Acceptable   | Issue      | Concern    |
| Declined               | Good        | Acceptable | Issue        | Issue      | Concern    |
| Declined Significantly | Acceptable  | Issue      | Issue        | Concern    | Concern    |

**Category Evaluation**

The category evaluation is an average of the Overall Evaluation of the measures that make up the category. For the purpose of the calculation, consider an Overall Evaluation of Excellent to be 2, Good to be 1, Acceptable to be 0, Issue to be -1, and Concern to be -2. The simple average (mean) of these values rounded to the nearest integer produces the Category Evaluation value. This is converted back to a colour using the same scale above (e.g. 2=Excellent, 1=Good, 0=Intermediate, -1=Issue, -2=Concern)

## Goal One: Success for Every Student

*Outcome: Students demonstrate proficiency in literacy and numeracy.*

| Performance Measure   | Results (in percentages) |      |      |      |      | Target <sup>1</sup> | Evaluation  |             |         | Targets <sup>2</sup> |      |      |
|---|--------------------------|------|------|------|------|---------------------|-------------|-------------|---------|----------------------|------|------|
|   | 2008                     | 2009 | 2010 | 2011 | 2012 | 2012                | Achievement | Improvement | Overall | 2013                 | 2014 | 2015 |
| Overall percentage of students in Grades 3, 6 and 9 who achieved the acceptable standard on Provincial Achievement Tests (overall cohort results).    | 74.2                     | 89.1 | 93.3 | 97.6 | 87.0 | 90                  | High        | Maintained  | Good    | 90                   | 90   | 90   |
| Overall percentage of students in Grades 3, 6 and 9 who achieved the standard of excellence on Provincial Achievement Tests (overall cohort results). | 16.1                     | 28.1 | 25.0 | 31.7 | 18.5 | 20                  | High        | Maintained  | Good    | 20                   | 20   | 20   |

### Comment on Results

*Results are at the Provincial average and the long term goal is to maintain this level of Achievement.*

### Strategies

*All staff are engaged in SmartLearning or Inquiry based learning to enhance the instruction in their classrooms. See the PD Plan for further details.*

### Notes:

1. Aggregated PAT results are based upon a weighted average of percent meeting standards (Acceptable, Excellence). The weights are the number of students enrolled in each course. Courses included: English Language Arts (Grades 3, 6, 9), Science (Grades 6, 9), French Language Arts (Grades 6, 9), Français (Grades 6, 9). The percentages achieving the acceptable standard include the percentages achieving the standard of excellence.
2. Data values have been suppressed where the number of students is less than 6. Suppression is marked with an asterisk (\*).

*Outcome: Students develop competencies for success as engaged thinkers and ethical citizens with an entrepreneurial spirit.*

| Performance Measure  | Results (in percentages) |      |      |      |      | Target | Evaluation  |             |           | Targets |      |      |
|--|--------------------------|------|------|------|------|--------|-------------|-------------|-----------|---------|------|------|
|  | 2008                     | 2009 | 2010 | 2011 | 2012 | 2012   | Achievement | Improvement | Overall   | 2013    | 2014 | 2015 |
| Percentage of teachers, parents and students who are satisfied that students model the characteristics of active citizenship.                                  | 77.0                     | 84.7 | 84.4 | 83.5 | 84.6 | 85     | Very High   | Maintained  | Excellent | 85      | 85   | 85   |
| Percentage of teachers and parents who agree that students are taught attitudes and behaviours that will make them successful at work when they finish school. | 75.0                     | 84.6 | 73.1 | 81.0 | 69.4 | 80     | Low         | Maintained  | Issue     | 80      | 80   | 80   |

Note: Data values have been suppressed where the number of respondents is less than 6. Suppression is marked with an asterisk (\*).

## Goal Two: High Quality Education through Collaboration and Innovation

*Outcome: Effective learning and teaching within caring, respectful, safe and healthy environments.*

| Performance Measure  | Results (in percentages) |      |      |      |      | Target | Evaluation   |             |            | Targets |      |      |
|--|--------------------------|------|------|------|------|--------|--------------|-------------|------------|---------|------|------|
|  | 2008                     | 2009 | 2010 | 2011 | 2012 | 2012   | Achievement  | Improvement | Overall    | 2013    | 2014 | 2015 |
| Percentage of teachers, parents and students satisfied with the opportunity for students to receive a broad program of studies including fine arts, career, technology, and health and physical education. | 74.0                     | 78.3 | 73.7 | 77.3 | 73.3 | 70     | Intermediate | Maintained  | Acceptable | 75      | 75   | 75   |
| Percentage of teachers, parents and students satisfied with the overall quality of basic education.  | 88.0                     | 96.1 | 93.7 | 91.2 | 93.7 | 90     | Very High    | Maintained  | Excellent  | 90      | 90   | 90   |
| Percentage of teacher, parent and student agreement that: students are safe at school, are learning the importance of caring for others, are learning respect for others and are treated fairly in school. | 85.8                     | 89.0 | 87.8 | 86.2 | 89.5 | 90     | Very High    | Maintained  | Excellent  | 90      | 90   | 90   |

Note: Data values have been suppressed where the number of respondents is less than 6. Suppression is marked with an asterisk (\*).

*Outcome: The education system demonstrates leadership and collaboration.*

| Performance Measure  | Results (in percentages) |      |      |      |      | Target | Evaluation  |             |           | Targets |      |      |
|--|--------------------------|------|------|------|------|--------|-------------|-------------|-----------|---------|------|------|
|  | 2008                     | 2009 | 2010 | 2011 | 2012 | 2012   | Achievement | Improvement | Overall   | 2013    | 2014 | 2015 |
| Percentage of teachers and parents satisfied with parental involvement in decisions about their child's education.   | 81.6                     | 91.9 | 81.1 | 75.4 | 82.7 | 80     | Very High   | Maintained  | Excellent | 80      | 80   | 80   |
| Percentage of teachers, parents and students indicating that their school and schools in their jurisdiction have improved or stayed the same the last three years. | 76.6                     | 89.0 | 81.1 | 79.0 | 88.0 | 85     | Very High   | Maintained  | Excellent | 85      | 85   | 85   |

Note: Data values have been suppressed where the number of respondents is less than 6. Suppression is marked with an asterisk (\*).

**APPENDIX – Measure Details**

The following pages include tables and graphs that provide detailed data for the performance measures. Schools may include these under each measure/outcome to provide context and help in interpreting the results.

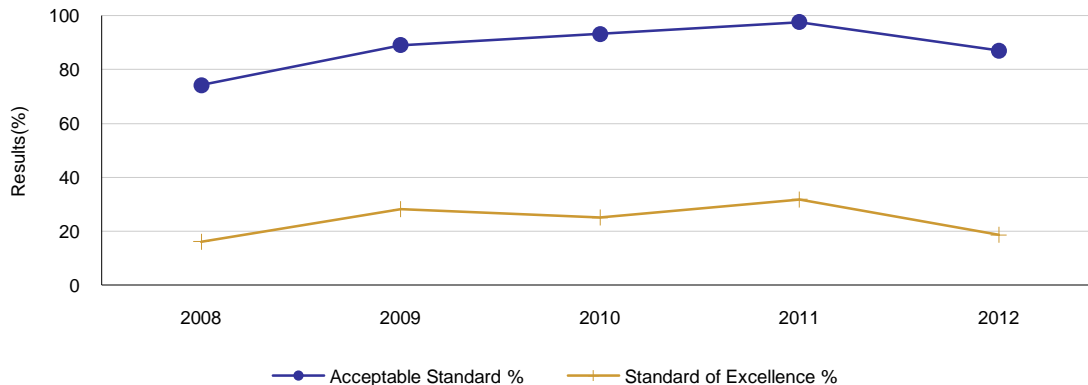
**Provincial Achievement Test Results – Measure Details**

| PAT Course by Course Results by Number Enrolled. |           |                          |      |      |      |       |      |       |      |      |      |        |    |
|--|-----------|--------------------------|------|------|------|-------|------|-------|------|------|------|--------|----|
|  |           | Results (in percentages) |      |      |      |       |      |       |      |      |      | Target |    |
|  |           | 2008                     |      | 2009 |      | 2010  |      | 2011  |      | 2012 |      | 2012   |    |
|  |           | A                        | E    | A    | E    | A     | E    | A     | E    | A    | E    | A      | E  |
| English Language Arts 3                          | School    | 100.0                    | 27.8 | 91.7 | 20.8 | 100.0 | 22.2 | 100.0 | 20.0 | 92.9 | 35.7 | 100    | 25 |
|  | Authority | 86.8                     | 12.2 | 86.4 | 11.2 | 84.2  | 16.9 | 86.2  | 9.8  | 84.9 | 12.6 |        |    |
|  | Province  | 80.1                     | 16.1 | 81.3 | 18.2 | 81.6  | 19.5 | 81.8  | 17.5 | 81.9 | 20.4 |        |    |
| Mathematics 3                                    | School    | n/a                      | n/a  | n/a  | n/a  | n/a   | n/a  | 80.0  | 6.7  | 92.9 | 7.1  | 100    | 30 |
|  | Authority | n/a                      | n/a  | n/a  | n/a  | n/a   | n/a  | 80.3  | 21.1 | 80.3 | 18.6 |        |    |
|  | Province  | n/a                      | n/a  | n/a  | n/a  | n/a   | n/a  | 77.4  | 26.0 | 76.8 | 25.5 |        |    |
| English Language Arts 6                          | School    | 63.6                     | 13.6 | 90.0 | 35.0 | 95.2  | 28.6 | 92.3  | 38.5 | 90.0 | 10.0 | 100    | 25 |
|  | Authority | 84.6                     | 17.7 | 88.6 | 17.1 | 83.0  | 13.1 | 83.2  | 9.2  | 85.1 | 9.2  |        |    |
|  | Province  | 81.1                     | 21.0 | 81.8 | 18.9 | 83.3  | 18.9 | 83.0  | 18.5 | 82.7 | 17.8 |        |    |
| Mathematics 6                                    | School    | n/a                      | n/a  | n/a  | n/a  | n/a   | n/a  | 100.0 | 38.5 | 80.0 | 10.0 | 90     | 20 |
|  | Authority | n/a                      | n/a  | n/a  | n/a  | n/a   | n/a  | 73.3  | 12.3 | 70.7 | 9.2  |        |    |
|  | Province  | n/a                      | n/a  | n/a  | n/a  | n/a   | n/a  | 73.7  | 17.8 | 74.7 | 16.6 |        |    |
| Science 6  | School    | 63.6                     | 9.1  | 85.0 | 30.0 | 85.7  | 23.8 | 100.0 | 38.5 | 80.0 | 15.0 | 85     | 15 |
|  | Authority | 77.6                     | 22.2 | 80.4 | 25.9 | 79.4  | 22.5 | 77.4  | 23.4 | 79.9 | 21.3 |        |    |
|  | Province  | 74.8                     | 24.1 | 76.5 | 24.8 | 76.8  | 26.4 | 76.2  | 25.0 | 77.8 | 28.2 |        |    |
| Social Studies 6                                 | School    | n/a                      | n/a  | n/a  | n/a  | 66.7  | 9.5  | 100.0 | 23.1 | 65.0 | 15.0 | 85     | 15 |
|  | Authority | n/a                      | n/a  | n/a  | n/a  | 71.3  | 13.1 | 71.5  | 11.0 | 71.8 | 11.5 |        |    |
|  | Province  | n/a                      | n/a  | n/a  | n/a  | 71.0  | 16.4 | 71.1  | 18.5 | 73.2 | 19.5 |        |    |

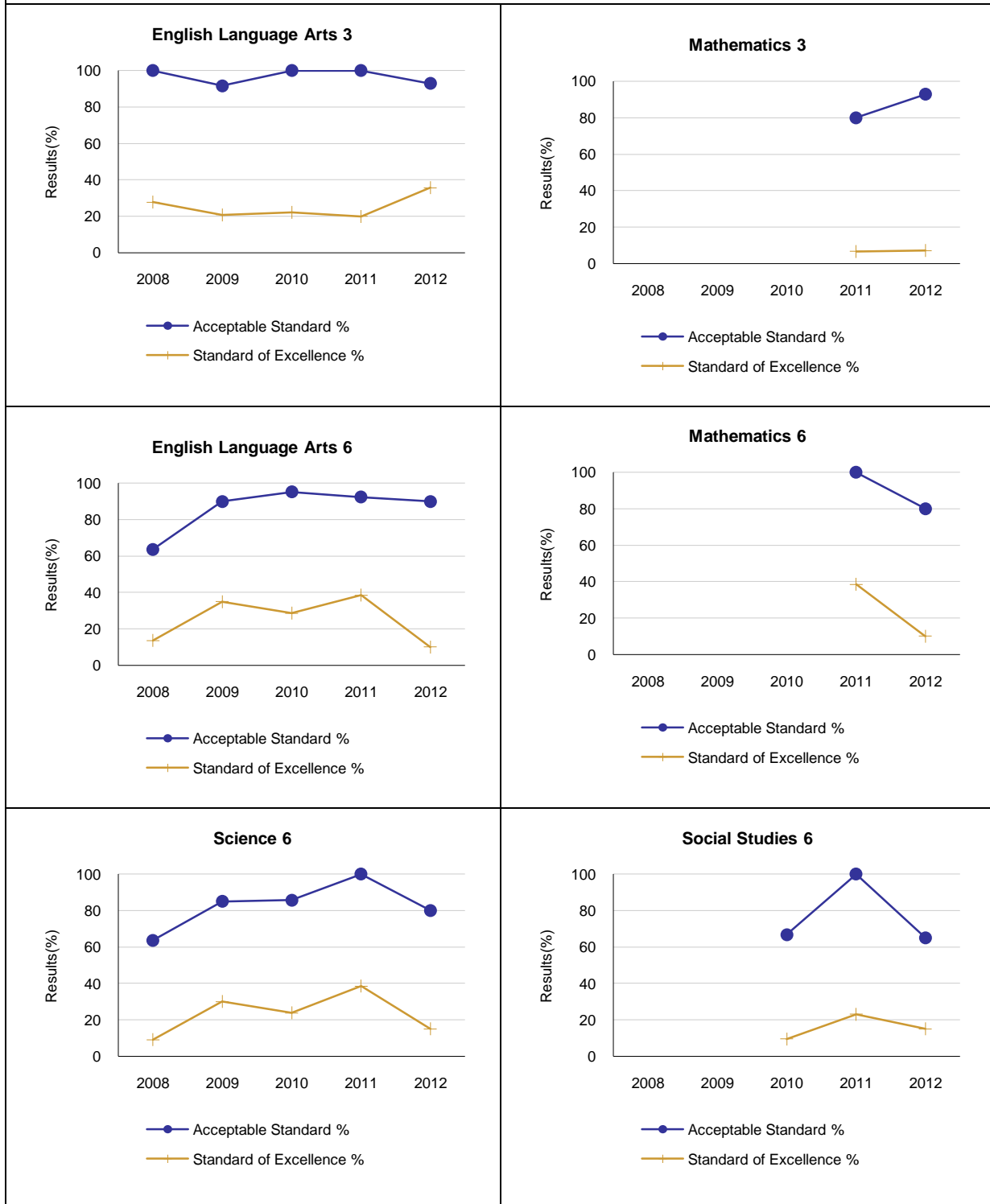
Note: Data values have been suppressed where the number of students is less than 6. Suppression is marked with an asterisk (\*).

"A" = Acceptable; "E" = Excellence — the percentages achieving the acceptable standard include the percentages achieving the standard of excellence.

Graph of Overall Provincial Achievement Test Results



Graph of Provincial Achievement Test Results by Course



Note: Data values have been suppressed where the number of students is less than 6. Suppression is marked with an asterisk (\*).

PAT Results Course By Course Summary By Enrolled With Measure Evaluation

|                         |                        | Leslieville Elementary School |             |            |      |      |               | Alberta |        |      |               |      |
|-------------------------|------------------------|-------------------------------|-------------|------------|------|------|---------------|---------|--------|------|---------------|------|
|                         |                        | Achievement                   | Improvement | Overall    | 2012 |      | Prev 3 Yr Avg |         | 2012   |      | Prev 3 Yr Avg |      |
| Course                  | Measure                |                               |             |            | N    | %    | N             | %       | N      | %    | N             | %    |
| English Language Arts 3 | Acceptable Standard    | High                          | Maintained  | Good       | 14   | 92.9 | 19            | 97.2    | 44,689 | 81.9 | 42,242        | 81.6 |
|                         | Standard of Excellence | Very High                     | Maintained  | Excellent  | 14   | 35.7 | 19            | 21.0    | 44,689 | 20.4 | 42,242        | 18.4 |
| Mathematics 3           | Acceptable Standard    | n/a                           | Improved    | n/a        | 14   | 92.9 | 15            | 80.0    | 44,689 | 76.8 | 42,957        | 77.4 |
|                         | Standard of Excellence | n/a                           | Maintained  | n/a        | 14   | 7.1  | 15            | 6.7     | 44,689 | 25.5 | 42,957        | 26.0 |
| English Language Arts 6 | Acceptable Standard    | High                          | Maintained  | Good       | 20   | 90.0 | 18            | 92.5    | 43,170 | 82.7 | 43,453        | 82.7 |
|                         | Standard of Excellence | Low                           | Declined    | Issue      | 20   | 10.0 | 18            | 34.0    | 43,170 | 17.8 | 43,453        | 18.8 |
| Mathematics 6           | Acceptable Standard    | n/a                           | Declined    | n/a        | 20   | 80.0 | 13            | 100.0   | 43,170 | 74.7 | 43,539        | 73.7 |
|                         | Standard of Excellence | n/a                           | Declined    | n/a        | 20   | 10.0 | 13            | 38.5    | 43,170 | 16.6 | 43,539        | 17.8 |
| Science 6               | Acceptable Standard    | Intermediate                  | Maintained  | Acceptable | 20   | 80.0 | 18            | 90.2    | 43,073 | 77.8 | 43,389        | 76.5 |
|                         | Standard of Excellence | Low                           | Declined    | Issue      | 20   | 15.0 | 18            | 30.8    | 43,073 | 28.2 | 43,389        | 25.4 |
| Social Studies 6        | Acceptable Standard    | n/a                           | Declined    | n/a        | 20   | 65.0 | 17            | 83.3    | 43,170 | 73.2 | 43,569        | 71.1 |
|                         | Standard of Excellence | n/a                           | Maintained  | n/a        | 20   | 15.0 | 17            | 16.3    | 43,170 | 19.5 | 43,569        | 17.5 |

Note: Data values have been suppressed where the number of students is less than 6. Suppression is marked with an asterisk (\*).

Achievement Evaluation is not calculated for courses that do not have sufficient data available, either due to too few jurisdictions offering the course or because of changes in tests.



### Measure Evaluation Reference - Achievement Evaluation

Achievement evaluation is based upon a comparison of Current Year data to a set of standards which remain consistent over time. The Standards are calculated by taking the 3 year average of baseline data for each measure across all school jurisdictions and calculating the 5th, 25th, 75th, and 95th percentiles. Once calculated, these standards remain in place from year to year to allow for consistent planning and evaluation.

The table below shows the range of values defining the 5 achievement evaluation levels for each measure.

| Course                  | Measure                | Very Low     | Low           | Intermediate  | High          | Very High      |
|-------------------------|------------------------|--------------|---------------|---------------|---------------|----------------|
| English Language Arts 3 | Acceptable Standard    | 0.00 - 72.53 | 72.53 - 80.49 | 80.49 - 89.12 | 89.12 - 93.04 | 93.04 - 100.00 |
|                         | Standard of Excellence | 0.00 - 6.06  | 6.06 - 11.35  | 11.35 - 16.93 | 16.93 - 20.27 | 20.27 - 100.00 |
| French Language Arts 3  | Acceptable Standard    | 0.00 - 60.68 | 60.68 - 77.74 | 77.74 - 88.22 | 88.22 - 94.88 | 94.88 - 100.00 |
|                         | Standard of Excellence | 0.00 - 3.31  | 3.31 - 8.38   | 8.38 - 17.31  | 17.31 - 25.31 | 25.31 - 100.00 |
| English Language Arts 6 | Acceptable Standard    | 0.00 - 67.95 | 67.95 - 78.40 | 78.40 - 86.09 | 86.09 - 91.37 | 91.37 - 100.00 |
|                         | Standard of Excellence | 0.00 - 6.83  | 6.83 - 11.65  | 11.65 - 17.36 | 17.36 - 22.46 | 22.46 - 100.00 |
| French Language Arts 6  | Acceptable Standard    | 0.00 - 41.69 | 41.69 - 73.54 | 73.54 - 92.32 | 92.32 - 97.93 | 97.93 - 100.00 |
|                         | Standard of Excellence | 0.00 - 2.72  | 2.72 - 8.13   | 8.13 - 15.29  | 15.29 - 23.86 | 23.86 - 100.00 |
| Science 6               | Acceptable Standard    | 0.00 - 60.36 | 60.36 - 78.51 | 78.51 - 86.46 | 86.46 - 90.64 | 90.64 - 100.00 |
|                         | Standard of Excellence | 0.00 - 11.74 | 11.74 - 17.42 | 17.42 - 25.34 | 25.34 - 34.31 | 34.31 - 100.00 |
| English Language Arts 9 | Acceptable Standard    | 0.00 - 63.55 | 63.55 - 75.66 | 75.66 - 83.70 | 83.70 - 90.27 | 90.27 - 100.00 |
|                         | Standard of Excellence | 0.00 - 5.96  | 5.96 - 9.43   | 9.43 - 14.72  | 14.72 - 20.46 | 20.46 - 100.00 |
| French Language Arts 9  | Acceptable Standard    | 0.00 - 67.59 | 67.59 - 81.33 | 81.33 - 92.06 | 92.06 - 97.26 | 97.26 - 100.00 |
|                         | Standard of Excellence | 0.00 - 1.67  | 1.67 - 6.81   | 6.81 - 17.11  | 17.11 - 28.68 | 28.68 - 100.00 |
| Science 9               | Acceptable Standard    | 0.00 - 50.57 | 50.57 - 60.14 | 60.14 - 72.50 | 72.50 - 76.89 | 76.89 - 100.00 |
|                         | Standard of Excellence | 0.00 - 3.39  | 3.39 - 6.71   | 6.71 - 11.81  | 11.81 - 15.85 | 15.85 - 100.00 |

Notes:

The range of values at each evaluation level is interpreted as greater than or equal to the lower value, and less than the higher value. For the Very High evaluation level, values range from greater than or equal to the lower value to 100%.

Achievement Evaluation is not calculated for courses that do not have sufficient data available, either due to too few jurisdictions offering the course or because of changes in tests.

### Improvement Table

For each jurisdiction, improvement evaluation consists of comparing the Current Year result for each measure with the previous three-year average. A chi-square statistical test is used to determine the significance of the improvement. This test takes into account the size of the jurisdiction in the calculation to make improvement evaluation fair across jurisdictions of different sizes.

The table below shows the definition of the 5 improvement evaluation levels based upon the chi-square result.

| Evaluation Category    | Chi-Square Range                                |
|------------------------|---|
| Declined Significantly | 3.84 + (current < previous 3-year average)      |
| Declined               | 1.00 - 3.83 (current < previous 3-year average) |
| Maintained             | less than 1.00                                  |
| Improved               | 1.00 - 3.83 (current > previous 3-year average) |
| Improved Significantly | 3.84 + (current > previous 3-year average)      |

### Overall Evaluation Table

The overall evaluation combines the Achievement Evaluation and the Improvement Evaluation. The table below illustrates how the Achievement and Improvement evaluations are combined to get the overall evaluation.

|                        | Achievement |            |              |            |            |
|------------------------|-------------|------------|--------------|------------|------------|
|                        | Very High   | High       | Intermediate | Low        | Very Low   |
| Improved Significantly | Excellent   | Good       | Good         | Good       | Acceptable |
| Improved               | Excellent   | Good       | Good         | Acceptable | Issue      |
| Maintained             | Excellent   | Good       | Acceptable   | Issue      | Concern    |
| Declined               | Good        | Acceptable | Issue        | Issue      | Concern    |
| Declined Significantly | Acceptable  | Issue      | Issue        | Concern    | Concern    |

### **Measure Evaluation Reference - Achievement Evaluation**

Achievement evaluation is based upon a comparison of Current Year data to a set of standards which remain consistent over time. The Standards are calculated by taking the 3 year average of baseline data for each measure across all school jurisdictions and calculating the 5th, 25th, 75th, and 95th percentiles. Once calculated, these standards remain in place from year to year to allow for consistent planning and evaluation.

The table below shows the range of values defining the 5 achievement evaluation levels for each measure.

The range of values at each evaluation level is interpreted as greater than or equal to the lower value, and less than the higher value. For the Very High evaluation level, values range from greater than or equal to the lower value to 100%.

Achievement Evaluation is not calculated for courses that do not have sufficient data available, either due to too few jurisdictions offering the course or because of changes in examinations.

### **Improvement Table**

For each jurisdiction, improvement evaluation consists of comparing the Current Year result for each measure with the previous three-year average. A chi-square statistical test is used to determine the significance of the improvement. This test takes into account the size of the jurisdiction in the calculation to make improvement evaluation fair across jurisdictions of different sizes.

The table below shows the definition of the 5 improvement evaluation levels based upon the chi-square result.

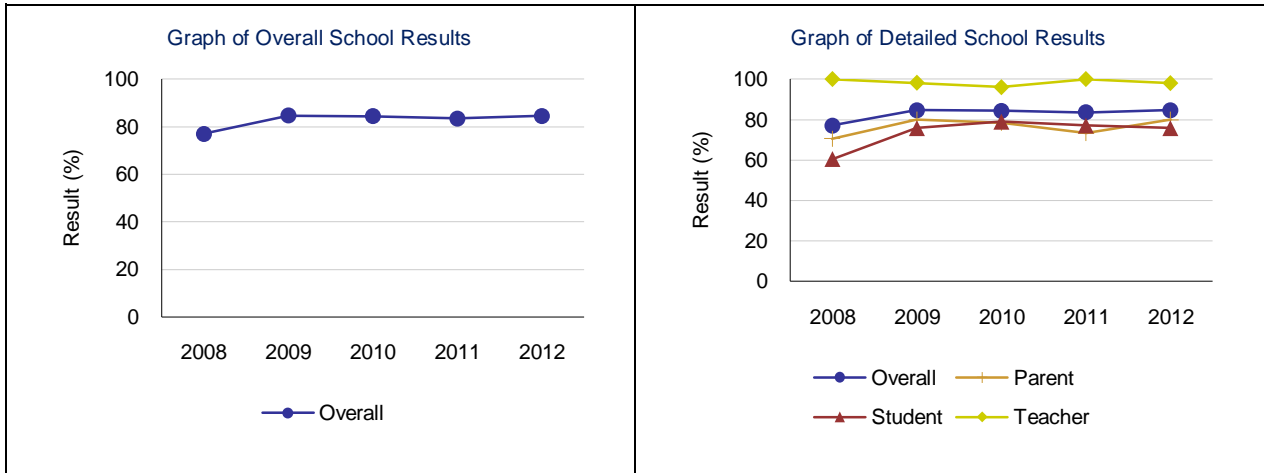
### **Overall Evaluation Table**

The overall evaluation combines the Achievement Evaluation and the Improvement Evaluation. The table below illustrates how the Achievement and Improvement evaluations are combined to get the overall evaluation.

**Citizenship – Measure Details**

Percentage of teachers, parents and students who are satisfied that students model the characteristics of active citizenship.

|         | School |      |      |       |      | Authority |      |      |      |      | Province |      |      |      |      |
|---------|--------|------|------|-------|------|-----------|------|------|------|------|----------|------|------|------|------|
|         | 2008   | 2009 | 2010 | 2011  | 2012 | 2008      | 2009 | 2010 | 2011 | 2012 | 2008     | 2009 | 2010 | 2011 | 2012 |
| Overall | 77.0   | 84.7 | 84.4 | 83.5  | 84.6 | 72.0      | 75.1 | 75.1 | 73.8 | 73.8 | 77.9     | 80.3 | 81.4 | 81.9 | 82.5 |
| Teacher | 100.0  | 98.2 | 96.0 | 100.0 | 98.0 | 84.0      | 88.6 | 91.4 | 87.2 | 86.6 | 90.6     | 91.8 | 93.0 | 92.7 | 93.1 |
| Parent  | 70.6   | 80.0 | 78.4 | 73.3  | 80.0 | 65.6      | 66.6 | 68.4 | 69.0 | 69.2 | 74.7     | 77.4 | 78.5 | 78.6 | 79.4 |
| Student | 60.4   | 75.8 | 79.0 | 77.1  | 75.8 | 66.3      | 70.0 | 65.4 | 65.4 | 65.7 | 68.5     | 71.8 | 72.7 | 74.5 | 75.0 |

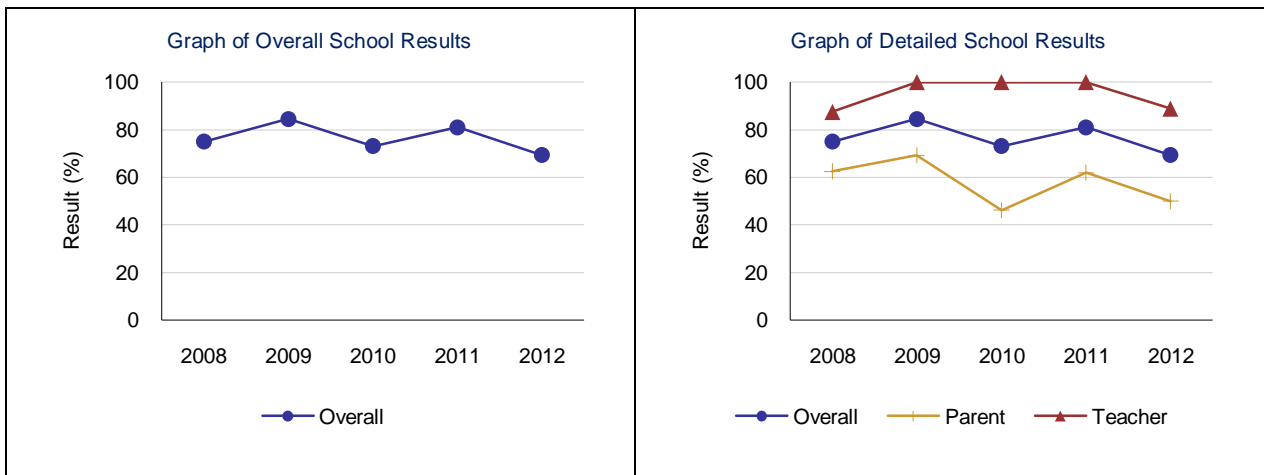


Note: Data values have been suppressed where the number of respondents is less than 6. Suppression is marked with an asterisk (\*).

**Work Preparation – Measure Details**

Percentage of teachers and parents who agree that students are taught attitudes and behaviours that will make them successful at work when they finish school.

|         | School |       |       |       |      | Authority |      |      |      |      | Province |      |      |      |      |
|---------|--------|-------|-------|-------|------|-----------|------|------|------|------|----------|------|------|------|------|
|         | 2008   | 2009  | 2010  | 2011  | 2012 | 2008      | 2009 | 2010 | 2011 | 2012 | 2008     | 2009 | 2010 | 2011 | 2012 |
| Overall | 75.0   | 84.6  | 73.1  | 81.0  | 69.4 | 76.8      | 76.2 | 72.9 | 73.8 | 69.3 | 80.1     | 79.6 | 79.9 | 80.1 | 79.7 |
| Teacher | 87.5   | 100.0 | 100.0 | 100.0 | 88.9 | 89.2      | 91.0 | 90.0 | 82.2 | 84.0 | 89.3     | 88.9 | 90.0 | 89.6 | 89.5 |
| Parent  | 62.5   | 69.2  | 46.2  | 61.9  | 50.0 | 64.3      | 61.5 | 55.9 | 65.5 | 54.6 | 70.9     | 70.2 | 69.8 | 70.6 | 69.9 |

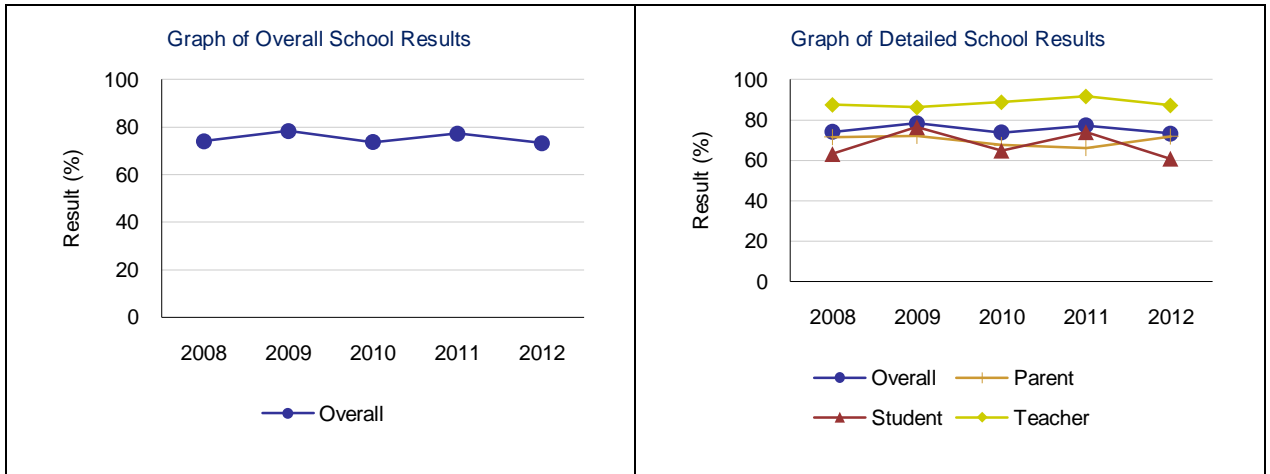


Note: Data values have been suppressed where the number of respondents is less than 6. Suppression is marked with an asterisk (\*).

**Program of Studies – Measure Details**

Percentage of teachers, parents and students satisfied with the opportunity for students to receive a broad program of studies including fine arts, career, technology, and health and physical education.

|         | School |      |      |      |      | Authority |      |      |      |      | Province |      |      |      |      |
|---------|--------|------|------|------|------|-----------|------|------|------|------|----------|------|------|------|------|
|         | 2008   | 2009 | 2010 | 2011 | 2012 | 2008      | 2009 | 2010 | 2011 | 2012 | 2008     | 2009 | 2010 | 2011 | 2012 |
| Overall | 74.0   | 78.3 | 73.7 | 77.3 | 73.3 | 73.4      | 74.5 | 71.9 | 75.2 | 71.9 | 79.4     | 80.3 | 80.5 | 80.9 | 80.7 |
| Teacher | 87.5   | 86.2 | 88.8 | 91.7 | 87.2 | 82.0      | 80.9 | 79.0 | 82.0 | 79.9 | 86.4     | 86.8 | 87.7 | 87.6 | 87.3 |
| Parent  | 71.5   | 72.1 | 67.6 | 66.1 | 71.8 | 70.3      | 69.9 | 69.6 | 72.8 | 69.5 | 77.6     | 78.7 | 78.0 | 78.3 | 78.1 |
| Student | 63.1   | 76.5 | 64.8 | 74.0 | 60.8 | 67.9      | 72.8 | 67.1 | 70.8 | 66.1 | 74.1     | 75.3 | 75.9 | 76.9 | 76.9 |

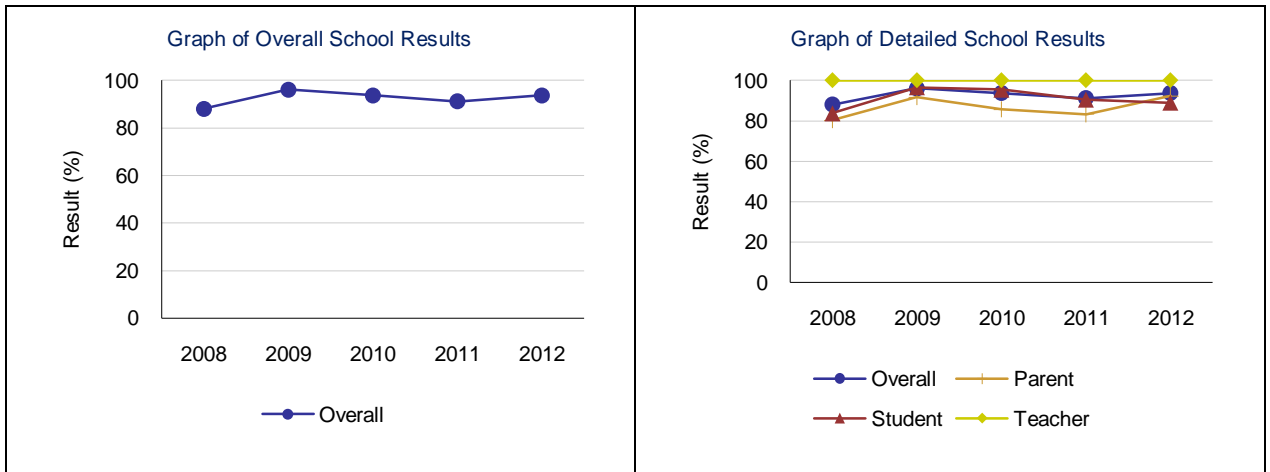


Note: Data values have been suppressed where the number of respondents is less than 6. Suppression is marked with an asterisk (\*).

**Education Quality – Measure Details**

Percentage of teachers, parents and students satisfied with the overall quality of basic education.

|         | School |       |       |       |       | Authority |      |      |      |      | Province |      |      |      |      |
|---------|--------|-------|-------|-------|-------|-----------|------|------|------|------|----------|------|------|------|------|
|         | 2008   | 2009  | 2010  | 2011  | 2012  | 2008      | 2009 | 2010 | 2011 | 2012 | 2008     | 2009 | 2010 | 2011 | 2012 |
| Overall | 88.0   | 96.1  | 93.7  | 91.2  | 93.7  | 87.1      | 87.4 | 86.2 | 85.1 | 84.9 | 88.2     | 89.3 | 89.2 | 89.4 | 89.4 |
| Teacher | 100.0  | 100.0 | 100.0 | 100.0 | 100.0 | 95.9      | 94.8 | 95.1 | 93.7 | 93.2 | 94.9     | 95.3 | 95.6 | 95.5 | 95.4 |
| Parent  | 80.2   | 91.7  | 85.6  | 83.2  | 92.2  | 79.9      | 78.7 | 78.9 | 78.5 | 77.7 | 83.0     | 84.4 | 83.9 | 84.2 | 84.2 |
| Student | 83.7   | 96.6  | 95.4  | 90.5  | 89.0  | 85.4      | 88.9 | 84.5 | 83.0 | 83.8 | 86.6     | 88.3 | 88.2 | 88.5 | 88.6 |

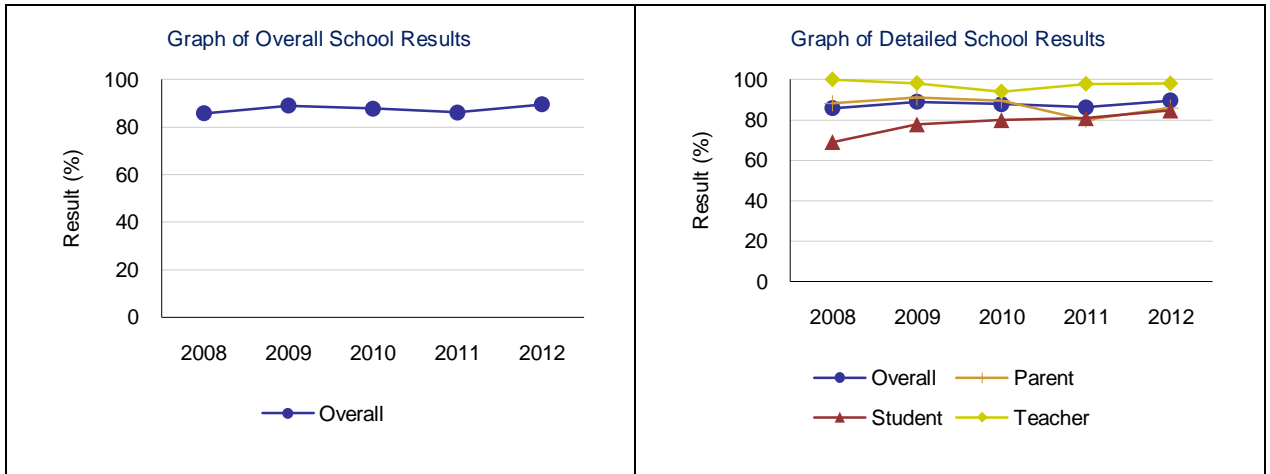


Note: Data values have been suppressed where the number of respondents is less than 6. Suppression is marked with an asterisk (\*).

**Safe and Caring – Measure Details**

Percentage of teacher, parent and student agreement that: students are safe at school, are learning the importance of caring for others, are learning respect for others and are treated fairly in school.

|         | School |      |      |      |      | Authority |      |      |      |      | Province |      |      |      |      |
|---------|--------|------|------|------|------|-----------|------|------|------|------|----------|------|------|------|------|
|         | 2008   | 2009 | 2010 | 2011 | 2012 | 2008      | 2009 | 2010 | 2011 | 2012 | 2008     | 2009 | 2010 | 2011 | 2012 |
| Overall | 85.8   | 89.0 | 87.8 | 86.2 | 89.5 | 82.8      | 83.8 | 83.2 | 83.1 | 82.6 | 85.1     | 86.9 | 87.6 | 88.1 | 88.6 |
| Teacher | 100.0  | 98.2 | 94.0 | 97.8 | 98.0 | 90.7      | 92.9 | 92.1 | 91.5 | 90.4 | 93.1     | 93.8 | 94.4 | 94.5 | 94.8 |
| Parent  | 88.2   | 91.2 | 89.5 | 80.0 | 85.9 | 80.2      | 78.2 | 80.6 | 80.2 | 80.4 | 83.2     | 85.3 | 86.1 | 86.6 | 87.4 |
| Student | 69.0   | 77.8 | 79.9 | 80.9 | 84.7 | 77.5      | 80.4 | 76.8 | 77.7 | 77.0 | 79.1     | 81.7 | 82.2 | 83.3 | 83.7 |

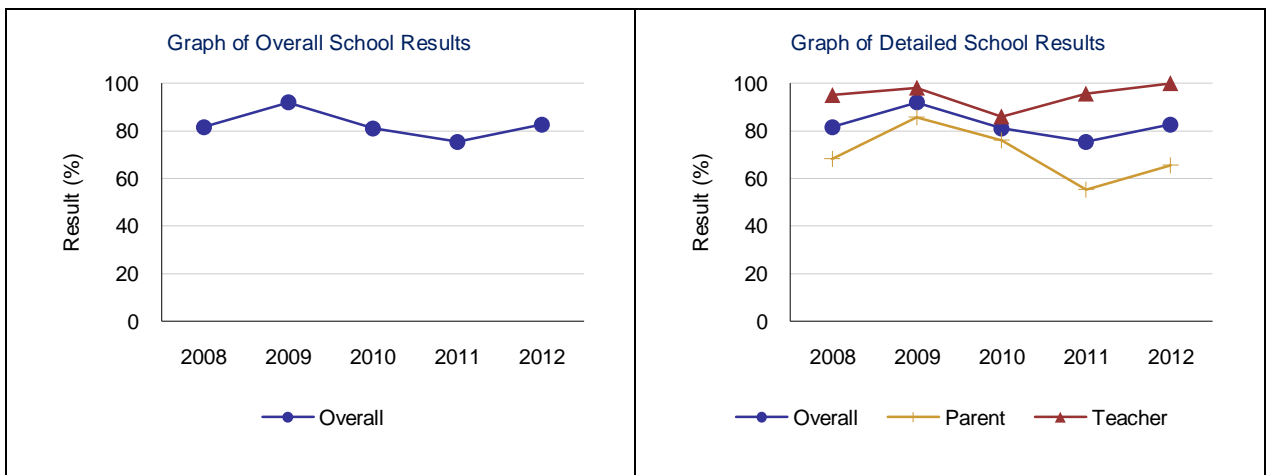


Note: Data values have been suppressed where the number of respondents is less than 6. Suppression is marked with an asterisk (\*).

**Parental Involvement – Measure Details**

Percentage of teachers and parents satisfied with parental involvement in decisions about their child's education.

|         | School |      |      |      |       | Authority |      |      |      |      | Province |      |      |      |      |
|---------|--------|------|------|------|-------|-----------|------|------|------|------|----------|------|------|------|------|
|         | 2008   | 2009 | 2010 | 2011 | 2012  | 2008      | 2009 | 2010 | 2011 | 2012 | 2008     | 2009 | 2010 | 2011 | 2012 |
| Overall | 81.6   | 91.9 | 81.1 | 75.4 | 82.7  | 80.0      | 79.4 | 76.8 | 74.8 | 73.9 | 78.2     | 80.1 | 80.0 | 79.9 | 79.7 |
| Teacher | 95.0   | 98.1 | 86.0 | 95.6 | 100.0 | 90.1      | 90.0 | 88.6 | 86.3 | 85.5 | 87.5     | 88.0 | 88.6 | 88.1 | 88.0 |
| Parent  | 68.2   | 85.7 | 76.1 | 55.3 | 65.5  | 69.9      | 68.8 | 65.0 | 63.2 | 62.3 | 69.0     | 72.2 | 71.3 | 71.7 | 71.4 |

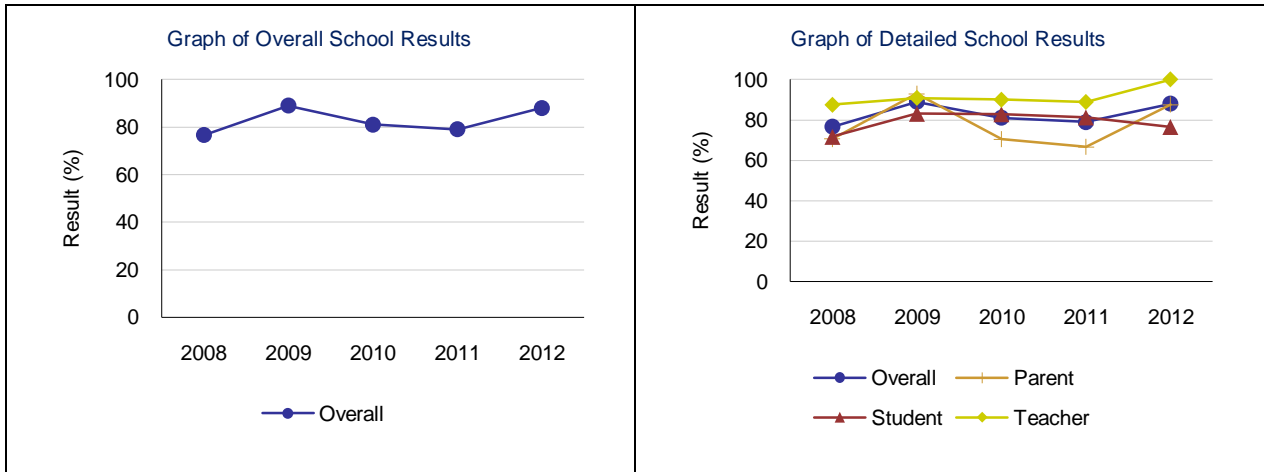


Note: Data values have been suppressed where the number of respondents is less than 6. Suppression is marked with an asterisk (\*).

**School Improvement – Measure Details**

Percentage of teachers, parents and students indicating that their school and schools in their jurisdiction have improved or stayed the same the last three years.

|         | School |      |      |      |       | Authority |      |      |      |      | Province |      |      |      |      |
|---------|--------|------|------|------|-------|-----------|------|------|------|------|----------|------|------|------|------|
|         | 2008   | 2009 | 2010 | 2011 | 2012  | 2008      | 2009 | 2010 | 2011 | 2012 | 2008     | 2009 | 2010 | 2011 | 2012 |
| Overall | 76.6   | 89.0 | 81.1 | 79.0 | 88.0  | 75.2      | 79.0 | 76.5 | 75.9 | 73.1 | 77.0     | 79.4 | 79.9 | 80.1 | 80.0 |
| Teacher | 87.5   | 90.9 | 90.0 | 88.9 | 100.0 | 73.6      | 83.2 | 77.2 | 76.4 | 77.1 | 75.6     | 78.2 | 80.8 | 80.1 | 81.1 |
| Parent  | 70.6   | 92.9 | 70.4 | 66.7 | 87.5  | 74.4      | 71.9 | 74.7 | 73.6 | 68.5 | 75.9     | 78.1 | 77.0 | 77.3 | 76.2 |
| Student | 71.7   | 83.1 | 82.9 | 81.3 | 76.6  | 77.7      | 81.7 | 77.6 | 77.5 | 73.8 | 79.5     | 81.8 | 81.8 | 82.9 | 82.7 |



Note: Data values have been suppressed where the number of respondents is less than 6. Suppression is marked with an asterisk (\*).